

Data Spaces Symposium

9:00

Data spaces making logistics more efficient,
supply chains more resilient

Domain session [automotive | logistics | supply chains]

Data Spaces Symposium

Data spaces making logistics more efficient,
supply chains more resilient

Ute Burkhardt

Introduction of the speaker



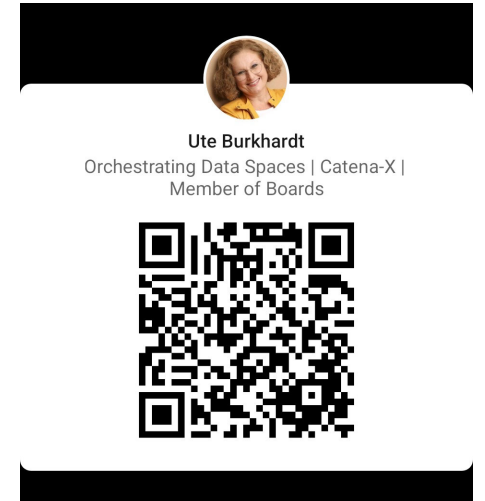
Ute Burkhardt

Fraunhofer Institute for Software and Systems Engineering ISST

IDSA Executive Board Member

iSHARE Supervisory Board Member

 <https://www.linkedin.com/in/ute-burkhardt/>



INTERNATIONAL DATA
SPACES ASSOCIATION



 **Fraunhofer**
ISST

Data Spaces Symposium

Onboarding of an automotive supplier
to Catena-X

Sebastian Kleff & Arunav Mishra



Our Founders



Dr. Sebastian Opriel & Sebastian Kleff

Empowering effortless and trustworthy connectivity

Experience with
Data Spaces
since 2016

Involved in numerous Data Spaces



Best Tech Stack Eclipse Data Space Components & Tractus-X and open-source



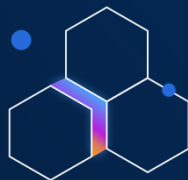
Values & Benefits

- Expert support
- Seamless integration
- Data Sovereignty
- Scalable solution
- Plug & Play
- Decentralized
- Interoperable
- Fast business case

Trusted by customers



Connector as a Service



Easiest onboarding and participation

Data Space as a Service



Fastest setup of entire Data Space

Data Space Consulting



Individual guidance on use case **architecture**

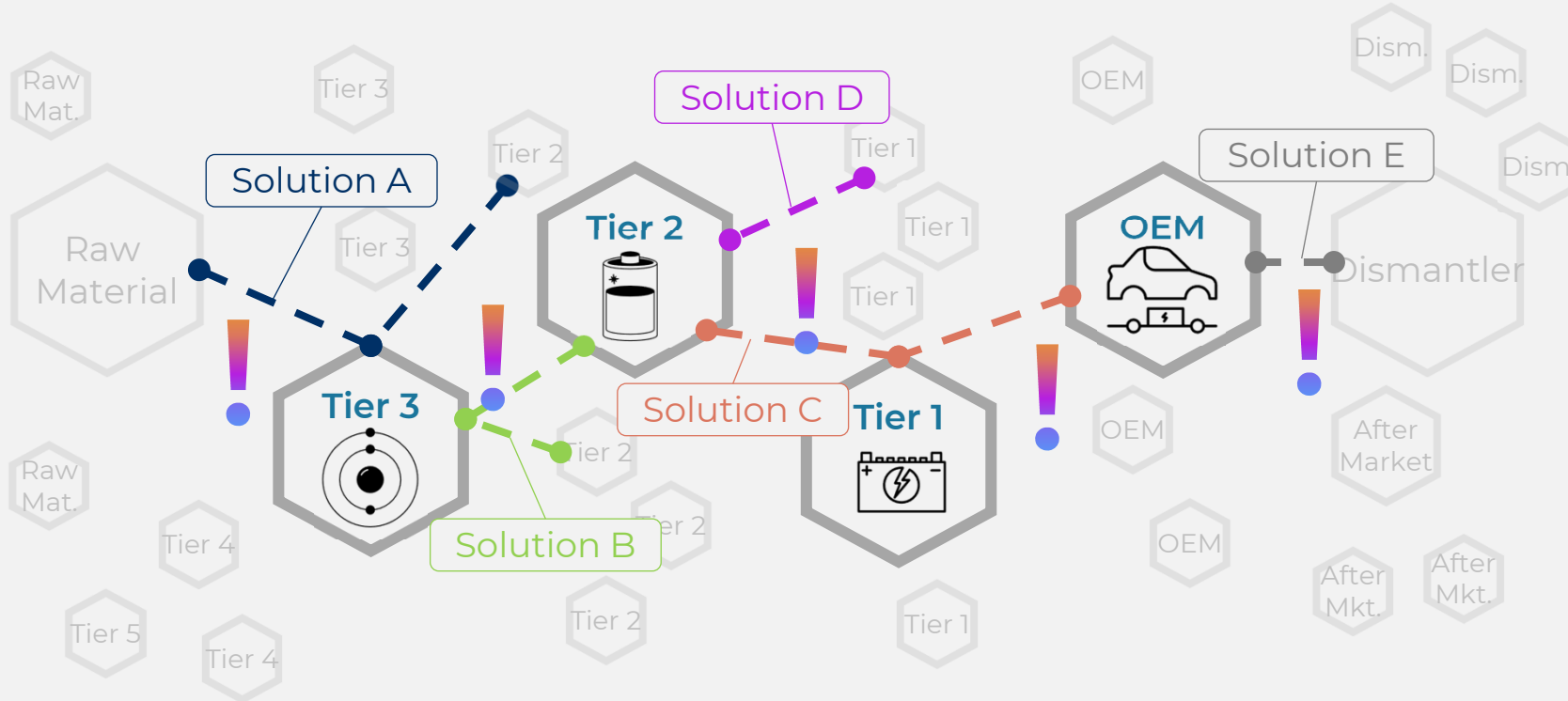
Follow Us



CHALLENGE

End-to-end data exchange for battery data mandatory

Regulations | market pressure | required process improvements



BASF

We create chemistry

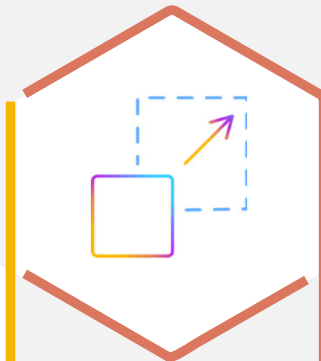
Traceability of battery parts incl. product passport is fundamental!

Exchange data based on standards

Standardized
common basis for data ecosystems by standards from data formats over protocols



Decentralized
Peer-to-peer network to keep data stored on data owner's side



Scalable
Based on open-source software to connect various sources, apps & partners



Catena-X
To establish end-to-end connectivity for all Automotive use cases

REQUIREMENTS

Data Spaces as one new key requirement for BASF

Software

Mandatory to use relevant software components

Open-source

Fast moving developments and community

Skill

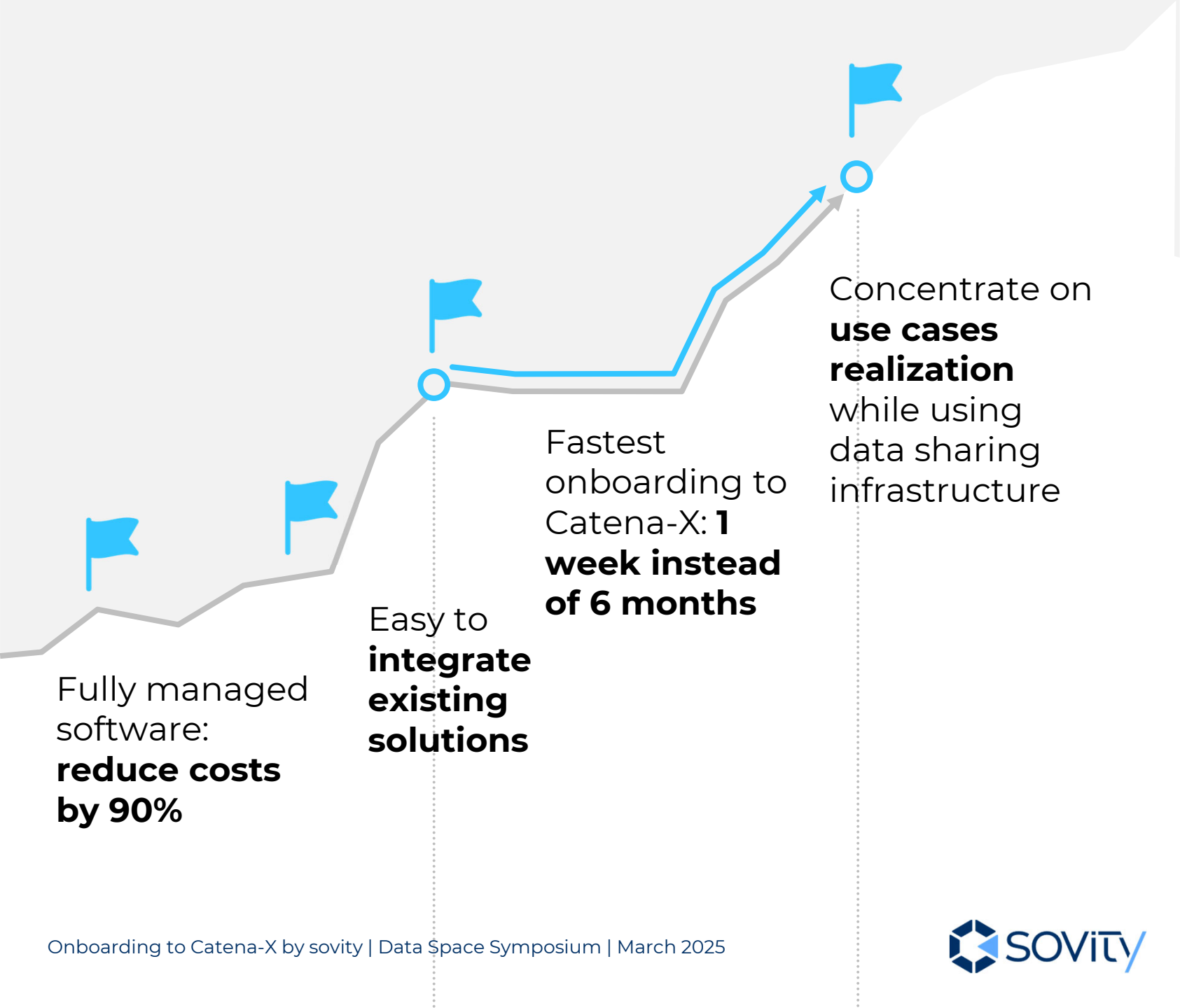
New skills and knowledge in tech and cloud required

Value creation

Complementing BASF infrastructure and business

SUCCESS

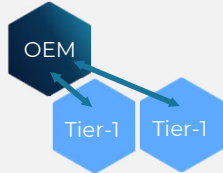
Data Space enablement for fastest value creation



VALUE CREATION

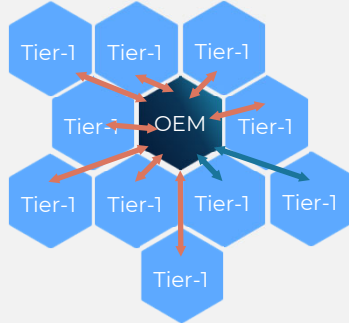
Generate Flywheel of thousands participants with unlimited use cases

This is made possible with a new product **CONXIFY**



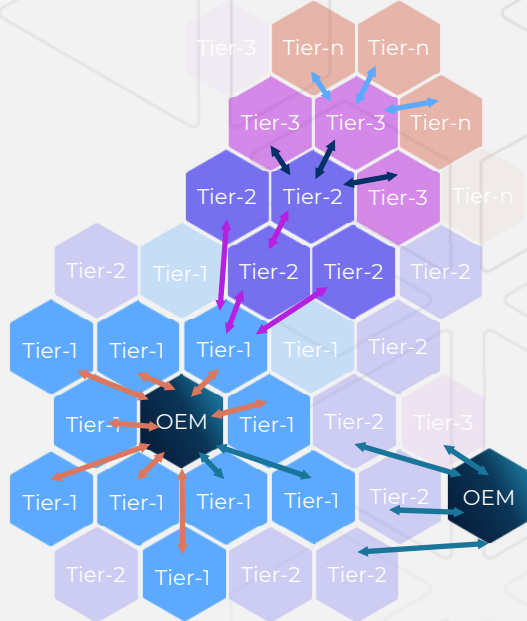
Summer 2024

Realize first business case in PoC



Q4-2024+

Horizontal scaling for first use case



2025+

Vertical scaling along entire network with multiple use cases

Seamless application connection across the value chain

Solution offering – Gateway to ecosystems with a snowball effect

CONXIFY

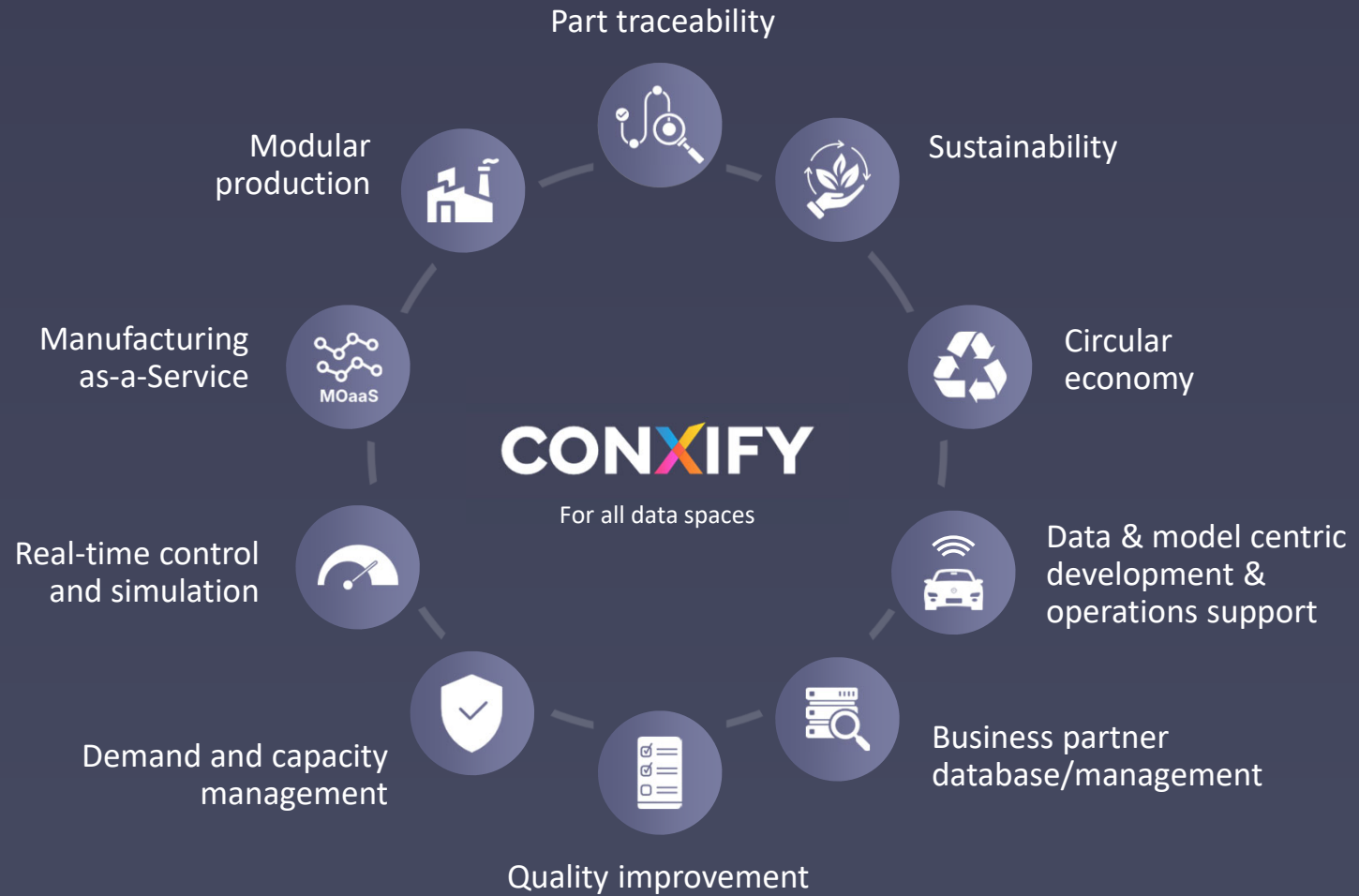
1
Data collection

2
Data validation

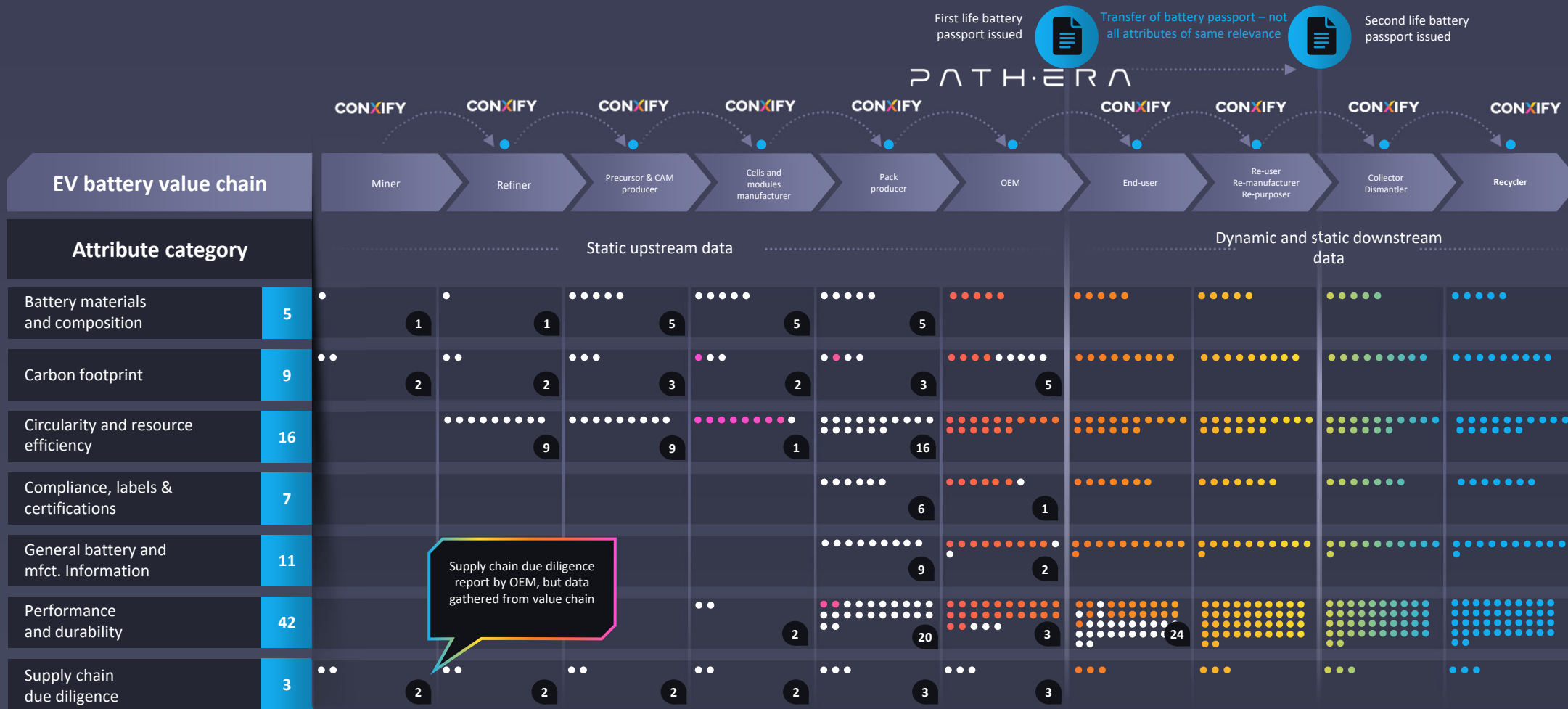
3
Application connection

4
Multiple Catena-X data models

5
Catena-X



Every EV battery value chain player will be required to provide data attributes to battery passports



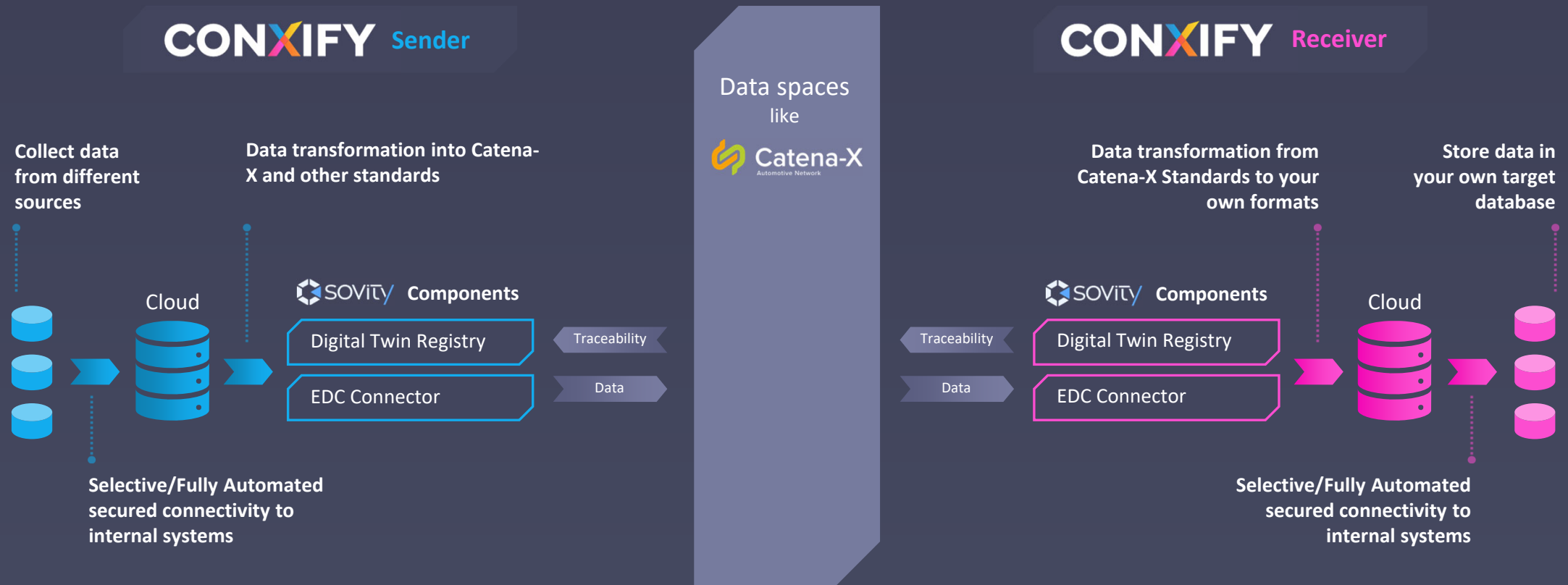
Total sum of attributes: 93

● Number of attributes added/updated per value chain step

CAM: Cathode Active Materials OEM: Original Equipment Manufacturer EV: Electrical Vehicle

● Data added ● Data added/updated in previous steps

ConXify: Out-of-the-Box Decentralized Components with Catena-X Services for Instant Start-up!





A subsidiary of BASF SE

15 years of IT experience and own IP in Data Space Connectivity

Located in Mannheim, Germany

Services beyond connecting Data Spaces, comprehensive supply chain connectivity

International/Global R&D Team

Offering tailormade solutions

“enhancing digital capabilities with seamless connectivity”

Let us scale Data Spaces, together!



Sebastian Kleff

CEO & Co-Founder

Sebastian.Kleff@sovity.de

www.sovity.de github.com/sovity



Arunav Mishra

CEO & MD

Arunav.Mishra@dataspacesolutions.com

www.conxify.de, www.dataspacesolutions.com

Data Spaces Symposium

Increasing productivity in
automotive supply chains

Sven Löffler

Data Spaces Symposium

Sven Löffler



Let's stay in contact!



LinkedIn



WeChat



Line

Key responsibilities



Director, Dataspaces & Data Products



IDSA Ambassador



Steering Committee member at Eclipse
Dataspace Working Group (EDWG)



Steering Council member, Manufacturing (M-X)



Steering member Gaia-X Federated Services for
Clearing House Providers



Project lead T-Systems & Business Owner (C-X Consortia
phase 1 for IAM, portal, dataspace components)

Expertise fields

+25 years of experience in the field of Data, AI, Dataspaces & Data Products

Worked previously for Cognos, IBM & Deutsche Telekom





Telekom Data Intelligence Hub

dih.telekom.com



T Systems

Real use cases and benefits for digital ecosystems



No market player, neither OEM nor supplier can solve these problems on their own

Success stories & references

“As a clearing house for Gaia-X and Catena-X, T-Systems is one of the first clearing houses available on the market, not only for Catena-X, but also for other partners. We found the right partner to give the right people in the dataspace to credit - who you are, are you rightfully or wrongfully in there - and to make sure that we are Gaia-X compliant.”



Oliver Ganser, Chief Executive Officer “Catena-X Association and Industry Consortium”

“The integrity of dataspaces is built on verified company identities. T-Systems, Gaia-X compliant clearing house is a key pillar during the onboarding of new members into the Catena-X dataspace, and an important partner for us in building a trusted data ecosystem”



Thomas Rösch - Chief Executive Officer, Cofinity-X

“Market players like T-Systems are playing an important role in making dataspaces a reality, operating digital clearing houses according to the specification of Gaia-X. With this we are creating a global standard for dataspaces in different domains, starting with flagship domains like the automotive.”

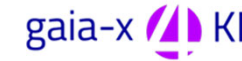


Ulrich Ahle, Chief Executive Officer - Gaia-X European Association for Data and Cloud AISBL

“In our view, we need market adopters, early movers, commercial companies that just ship the great technology, software components and services we need, and we have trailblazers like T-Systems with the data intelligence hub, which already showed us two years ago what the world of dataspaces could look like.”



Lars Nagel, Chief Executive Officer, International Data Spaces Association



Media kit dataspaces

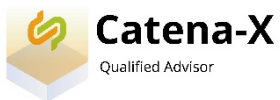
⇒ [Link](#)

T-Systems certified full-service provider for Catena-X



Onboarding Consulting

Expert Consulting for Catena-X Onboarding, Workshops Tailored for All Company Sizes



Registration with Catena-X/Cofinity-X

Registration in less than 72 hours to obtain a Business Partner Number. Single Sign-On access across multiple Dataspaces



Integration with Catena-X

Seamless data exchange across the entire automotive network with a multi-certified Connect & Integrate solution. One connector for all use cases. In the cloud of your choice



Catena-X Sandbox Provider

Certified Catena-X Sandbox Environment for secure testing and app development



Official DOS NOVA Reseller

Support for customers in using and integrating the Dataspace OS Nova solution

Partnership with
Cofinity-X

Catena-X onboarding support by T-Systems

Consulting:

- **Consulting** across the entire **Catena-X Portfolio**
- **Support** throughout the onboarding process, from benefit analysis and registration with Cofinity-X to the first productive integration and beyond
- Assistance in **Selecting Use Cases** and **Performing the Necessary Steps for Timely Onboarding**
- Selection of the right **Connector Solution**
- Explanation of **Security Measures** and protocols implemented to protect data within the **Catena-X Ecosystem** and additionally in **our Solutions**

Integration:

- Our dedicated expert team will guide you through the **Registration Process** and provide **Comprehensive Support before, during, and after** the go-live phase.
- Support in obtaining the **Cofinity-X Business Partner Number**
- **Setting up your Catena-X integration** for seamless data transfer with a unified connector solution

Operationalization & Scaling:

- We continuously maintain and develop your solution
- We assist you in **Scaling** effortlessly to other **Use Cases** with the **Connector Solution**
- **Global 24/7 Support**

**Step-by-step support by an onboarding expert team
for a successful Catena-X integration**

Flex | Product Carbon Footprint (PCF) in Catena-X



Building on our more than 50-year history with a clear purpose, mission, and vision, Flex is the advanced end-to-end manufacturing partner of choice, helping market-leading brands across a diverse set of industries design, build, deliver, and manage products that improve the world.

Through the collective strength of a global workforce across 30 countries, and responsible, sustainable operations, Flex supports their customers' entire product lifecycles with leading design and engineering, supply chain, manufacturing, post-production and post-sale capabilities in every major region.



Challenges

- Participate in an automotive OEM-led data chain to track primary CO2 emissions for accurate Product Carbon Footprint (PCF) tracking
- Ensure full compliance with Catena-X technology and standards for seamless interoperability
- Enable potential reuse of the solution in other use cases, such as the battery passport.



Solution

- Consulting services for knowledge transfer and solution design
- Implementation of Catena-X-certified "Connect & Integrate" for dataspace connectivity
- Deployment of Catena-X-certified PCF Exchange App for seamless interoperability in PCF data chains
- Migration to the first Catena-X operating environment provided by Cofinity-X



Benefits

- Achieved quick results without the need for complex systems integration
- Delivered on time and within budget, with a live demonstration at the 2024 IMDS-AIAG conference
- Built a scalable foundation for adding more PCF components and expanding to new use cases like the battery passport.

T-Systems: Verified and certified by external auditors

- Product quality and data security are a matter of trust, which is why T-Systems places the highest value on certified data protection and data security.
- Our automotive locations and cloud data centers are ISO and TISAX certified.
- Depending on the composition of the project teams, employees hold the necessary certifications, such as Scrum Master, AWS, Azure, etc.

We are the number 1 among the certified, trusted partners in the automotive, cloud, and dataspace industries.

• TISAX

• Catena-X & IDS

<https://internationaldataspaces.org/candidates-for-ids-certification-award-named/>

T-Systems won 5-star award for Catena-X contributions

• Connect & Integrate IDSA certification

The certification body of the IDSA hereby certifies that the T-Systems Data Intelligence Hub (DIH) connector of T-Systems International GmbH meets the requirements Trust Level 1, Assurance Level 2 IDS Certification for connectors as specified in the evaluation result. The evaluation result and certification requirements are referenced in the annex to the certificate. This certificate with the registration number IDS-COIN001-TL1-AL2-2023 is valid until 01.12.2025.

Darmstadt, 01.12.2023

Lars Nagel, CEO International Data Spaces Association
Thorsten Hülsmann, CIO International Data Spaces Association

Certification Body [certification@internationaldataspaces.org](https://internationaldataspaces.org/offers/certification/)

<https://internationaldataspaces.org/offers/certification/>

• Compliant

One of the first IDSA certification ready & GAIA-X compliant managed services

Germany

- Darmstadt
- Dresden
- Frankfurt/Main
- Ingolstadt
- Köln
- Leinfelden-Echterdingen
- Magdeburg
- München
- Wolfsburg

International

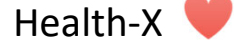
- Cerdanyola del Valles/Spain
- Debrecen/Hungary
- Košice/Slovakia
- Moscow/Russian Federation
- Pécs/Hungary
- Pune/India
- Quinta do Anjo Palmela/Portugal
- Reus/Spain
- Saint – Petersburg/Russian Federation
- Sao Bernardo do Campo/Brazil
- Szeged/Hungary
- Voronezh/Russian Federation

Automotive Locations

Why T-Systems? Your one-stop shop for dataspaces



WE SUPPORT YOU THROUGH YOUR WHOLE DATASPACE JOURNEY!



COMPLETE | Full-Service Provider: Advisory, Onboarding, Enablement



Gaia-X 4 Future Mobility project family



CERTIFIED | T-Systems solutions being compliant to Catena-X standards



SCALABLE | Data chain setup for all company sizes: from few to mass-data



AGNOSTIC | Any Use Case. Any Cloud. Any Software Vendor



SECURE | Trust Anchor & sovereign clouds



EFFICIENT | Low effort with automated processes. User-friendly UIs



ENGAGED | Contributing to several technical committees & expert groups



Join us at Hannover Messe 2025



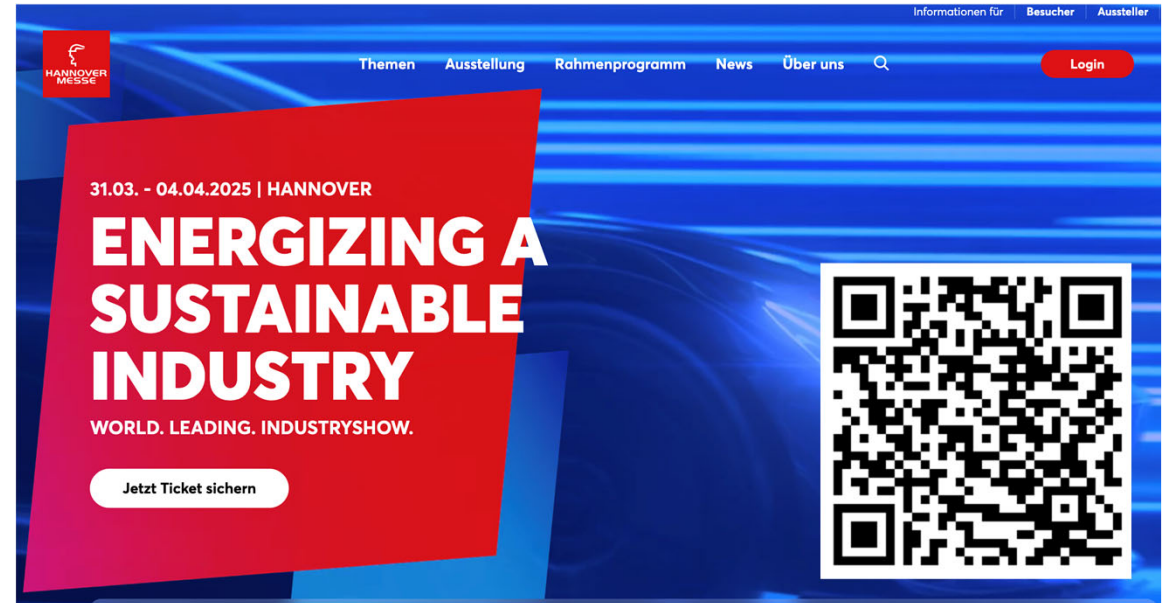
Sven Löffler

Lead, Dataspaces and
Data Products

sven.loeffler@t-systems.com



Visit our website!



T-Systems activities:

- **5 booths:** VDMA-Umati, Catena-X, Factory-X, RoX, T-Systems metaverse applications ...
- **11 talks:** featuring Ford, Flex, DeltaDao, NTT Communications, Cofinity-X, GDSO, Siemens, Gaia-X ...
- **Topics:** Dataspaces across industries (Manufacturing, Automotive, Robotics...), AI readiness, Federated identities, supply chain transparency ... **and much more**

Contact us to schedule a meeting and get your free ticket!

Data Spaces Symposium

How Cofinity-X leads the way of industry
data exchange

Niklas Midolo

From Theory to Practice

How Cofinity-X Leads the Way of Industry Data Exchange.

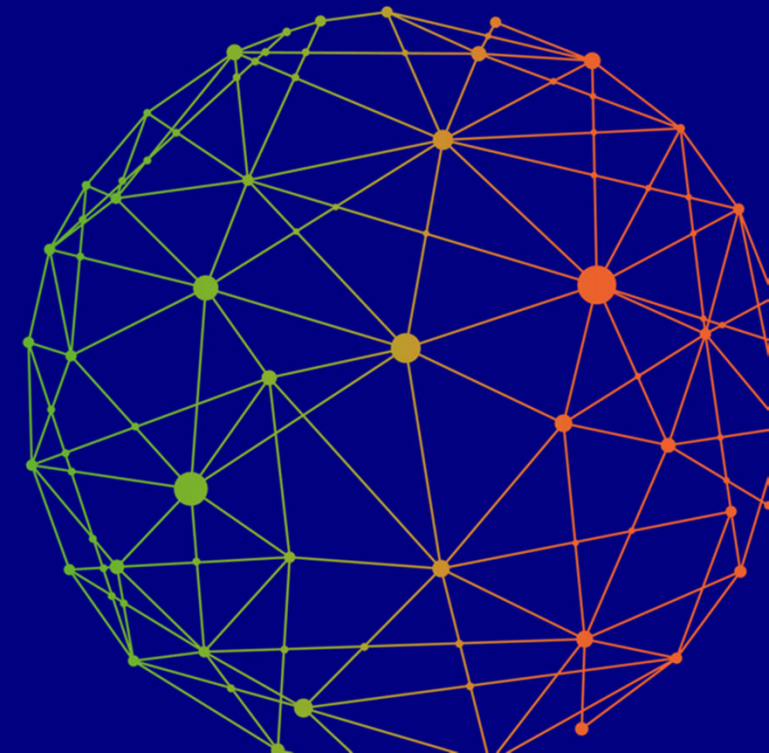
Data Spaces Symposium 2025



Niklas Midolo

Product & Strategy Manager

Cofinity-X



DSBA



INTERNATIONAL DATA SPACES ASSOCIATION



DATA SPACES SUPPORT CENTRE



The Data Spaces Support Centre receives funding from the European Union Digital Europe Programme under grant agreement n° 101083412

From Theory to Practice

How Cofinity-X Leads the Way of Industry Data Exchange.

Niklas Midolo

Data Spaces Symposium 2025

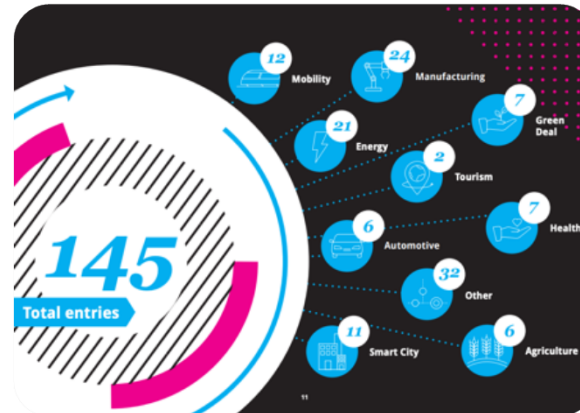
Status Quo of Dataspaces in 2025

145+ Dataspace Projects

(IDSA The Data Space Radar, March 2024)

Name	Development Stage	Sectors
0001 - German Data Space for Logistics	Operational	Logistics
0002 - German Data Space for Energy	Operational	Energy
0003 - German Data Space for Industry	Operational	Manufacturing
0004 - German Data Space for Agriculture	Operational	Agriculture
0005 - German Data Space for Smart City	Operational	Smart City
0006 - German Data Space for Mobility	Operational	Mobility
0007 - German Data Space for Tourism	Operational	Tourism
0008 - German Data Space for Health	Operational	Health
0009 - German Data Space for Green Deal	Operational	Green Deal
0010 - German Data Space for Other	Operational	Other

Name	Development Stage	Sectors
0011 - German Data Space for Logistics	Operational	Logistics
0012 - German Data Space for Energy	Operational	Energy
0013 - German Data Space for Industry	Operational	Manufacturing
0014 - German Data Space for Agriculture	Operational	Agriculture
0015 - German Data Space for Smart City	Operational	Smart City
0016 - German Data Space for Mobility	Operational	Mobility
0017 - German Data Space for Tourism	Operational	Tourism
0018 - German Data Space for Health	Operational	Health
0019 - German Data Space for Green Deal	Operational	Green Deal
0020 - German Data Space for Other	Operational	Other



Name	Development Stage	Sectors
0021 - German Data Space for Logistics	Operational	Logistics
0022 - German Data Space for Energy	Operational	Energy
0023 - German Data Space for Industry	Operational	Manufacturing
0024 - German Data Space for Agriculture	Operational	Agriculture
0025 - German Data Space for Smart City	Operational	Smart City
0026 - German Data Space for Mobility	Operational	Mobility
0027 - German Data Space for Tourism	Operational	Tourism
0028 - German Data Space for Health	Operational	Health
0029 - German Data Space for Green Deal	Operational	Green Deal
0030 - German Data Space for Other	Operational	Other

Name	Development Stage	Sectors
0031 - German Data Space for Logistics	Operational	Logistics
0032 - German Data Space for Energy	Operational	Energy
0033 - German Data Space for Industry	Operational	Manufacturing
0034 - German Data Space for Agriculture	Operational	Agriculture
0035 - German Data Space for Smart City	Operational	Smart City
0036 - German Data Space for Mobility	Operational	Mobility
0037 - German Data Space for Tourism	Operational	Tourism
0038 - German Data Space for Health	Operational	Health
0039 - German Data Space for Green Deal	Operational	Green Deal
0040 - German Data Space for Other	Operational	Other



Finanziert von der Europäischen Union
NextGenerationEU

Gefördert durch:



aufgrund eines Beschlusses
des Deutschen Bundestages



~90% of this Dataspace-Projects
are still in a **Research-Phase***

*all Projects below "Operational" Stage

Lighthouse Project



Dataspace

powered by



Lighthouse Project

Important Milestones



Catena-X
Automotive Network

Dataspace

powered by

Cofinity-X

May 2021

Foundation of Catena-X Automotive Network e.V.

August 2021

Official foundation of the Catena-X Consortium

December 2022

Go-Live of Tractus-X Open-Source Community

Oktober 2023

Go-Live of Catena-X Dataspace, powered by Cofinity-X

Cofinity-X

Smooth Operator of Industry Dataspaces

We are on a mission to bring
global industries together
and empower sovereign data
exchange.

Oktober 2023

Go-Live of Catena-X Dataspace, powered by Cofinity-X

Cofinity-X is a Joint Venture founded in January 2023 by 10 Shareholders



Unlock the Power of Dataspaces



Cofinity-X

Unlock the Power of Dataspaces

Focus on your Core Business, while we ensure your Smooth Dataspace Integration.

Cofinity-X provides **access and guidance** to the Catena-X dataspace.
Then we empower you to exploit its full potential for your **long-term success**.


Unlock the Power of Dataspaces

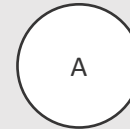
Dataspace Lab

Our Dataspace Lab enables you to develop and **validate your initial Proof-of-Concept (PoC)** for secure data exchange.

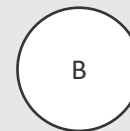
Easily integrate supply chain data, share compliance reports, or test **new collaboration models in our pre-configured test environment.**

Based on Tractus-X Tech-Stack, but no mandatory enforcement of Catena-X Standards.

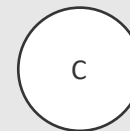
Start your free trial 



Proof-of-Concept: Immediate access to a fully functional test environment.

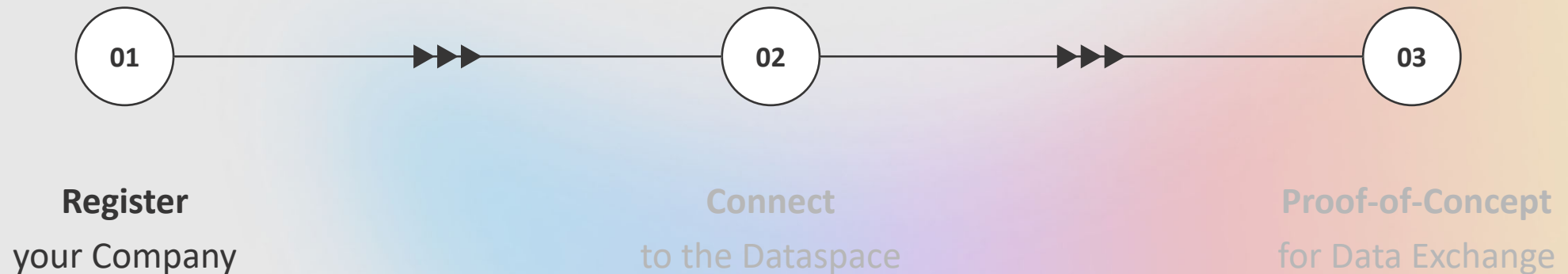


Minimal Setup Time: Start right away and enjoy a free 30-day trial.



Support: Benefit from direct guidance from Dataspace professionals.

3 Simple Steps into a fully functional Test-Environment



01

Register your Company

We will prepare your account and ask you to confirm your company details, such as VAT-ID and address.

A clearing house will validate the data before **we generate your unique Business Partner Number (BPN)**, essential for all activities within the dataspace.

Start your registration [↗](#)

01

Provide your **company data**

02

External **clearing house** validates your data

03

You **receive your BPN** and access to the **test environment**

02

Connect to the Dataspace

Before you can exchange data within the ecosystem, you need to set up your technical environment.

Whether you build or buy, one thing is crucial:

- ✓ **Eclipse Dataspace Components (EDC)**

Now that you have access, it's time to get set up for secure data exchange. With Cofinity-X, you get an out-of-the-box **Dataspace OS EDC-Connector** included in your trial subscription to get you up and running quickly and seamlessly.

For those who prefer flexibility, you can also **integrate your own open-source components or explore alternative solutions** available on the market.

Our team is on hand to guide you through the setup process, ensuring a smooth experience tailored to your needs.

03

Proof-of-Concept

Data Exchange

Once your setup is complete, you can **begin exchanging test data with a Test Company or other Business Partners** within the Dataspace ecosystem.

This step allows you to validate secure data exchange, evaluate integration with your systems and explore **real-world collaboration scenarios**.

Scaling Beyond Proof of Concept

- ✓ Optimising data workflows to improve automation and efficiency
- ✓ Explore advanced security measures for improved compliance
- ✓ Connecting with additional business partners to extend collaboration

With tailored support, you can move seamlessly **from pilot to production-ready data integration**, unlocking new business opportunities and strengthening your data ecosystem.

Dataspace Lab

30-day free trial, then €4,000 per year*

*Exclusive Offer for Dataspace Pioneers



Dataspace Access

Get exclusive access to a fully functional Test Environment, based on Tractus-X Tech-Stack.



Dataspace Connector

Dataspace OS connects you seamlessly and provides all essential tools for participation.



Customer Support

Best-in-class Customer Support, delivered by Dataspace Pioneers and Integration Experts.



Let's connect and start a great journey together.

Niklas Midolo

Product & Strategy Manager



niklas.midolo@cofinity-x.com



<https://www.cofinity-x.com/dataspace-lab>

Data Spaces Symposium

Supply Chain Radar: Efficient and proactive countermeasures to impending crises

Julien Adelberger

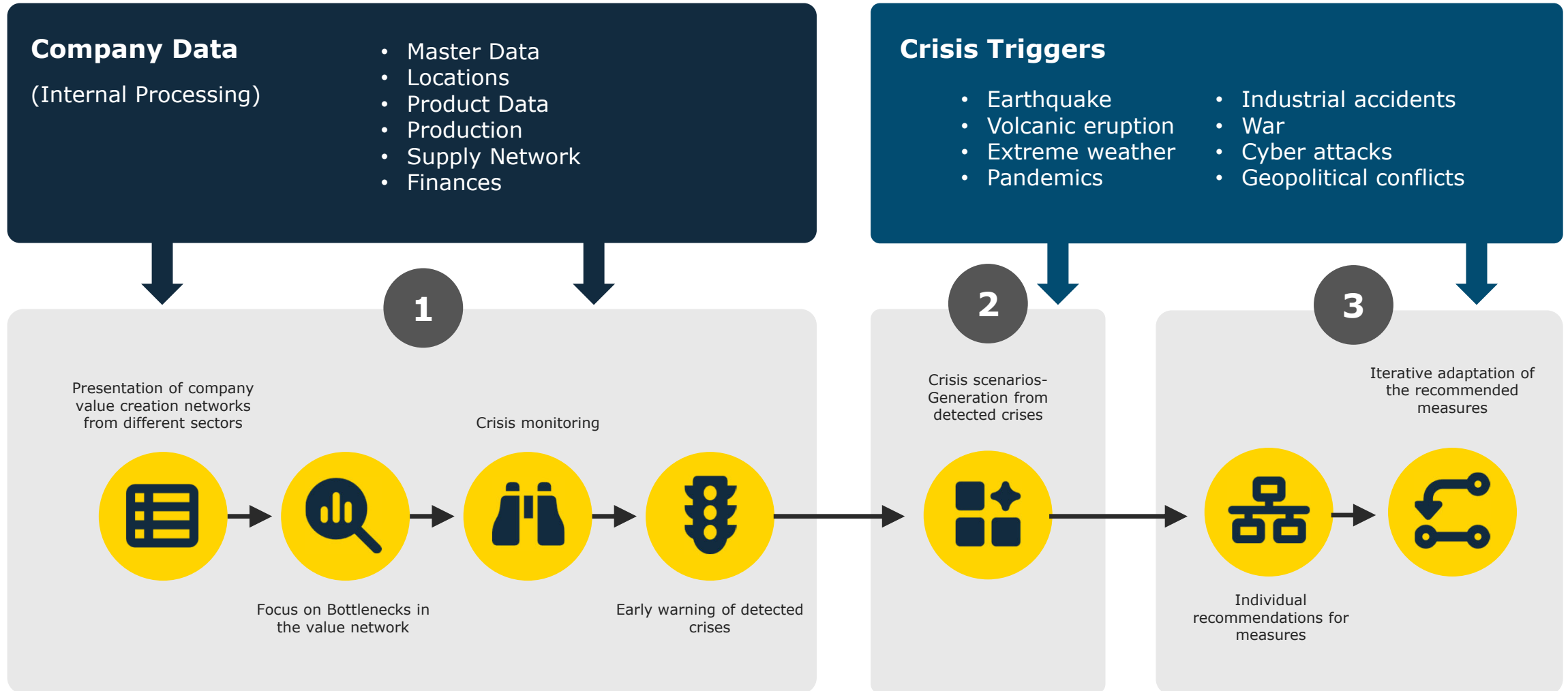


ADVANEEO



**Supply Chain Radar –
Managing crises
proactively and efficiently**

Use of data for company-specific crisis defense



Benefits of the SCR for SMEs



Customized “software as a service” solution for crisis management



No own IT infrastructure necessary



Quick start





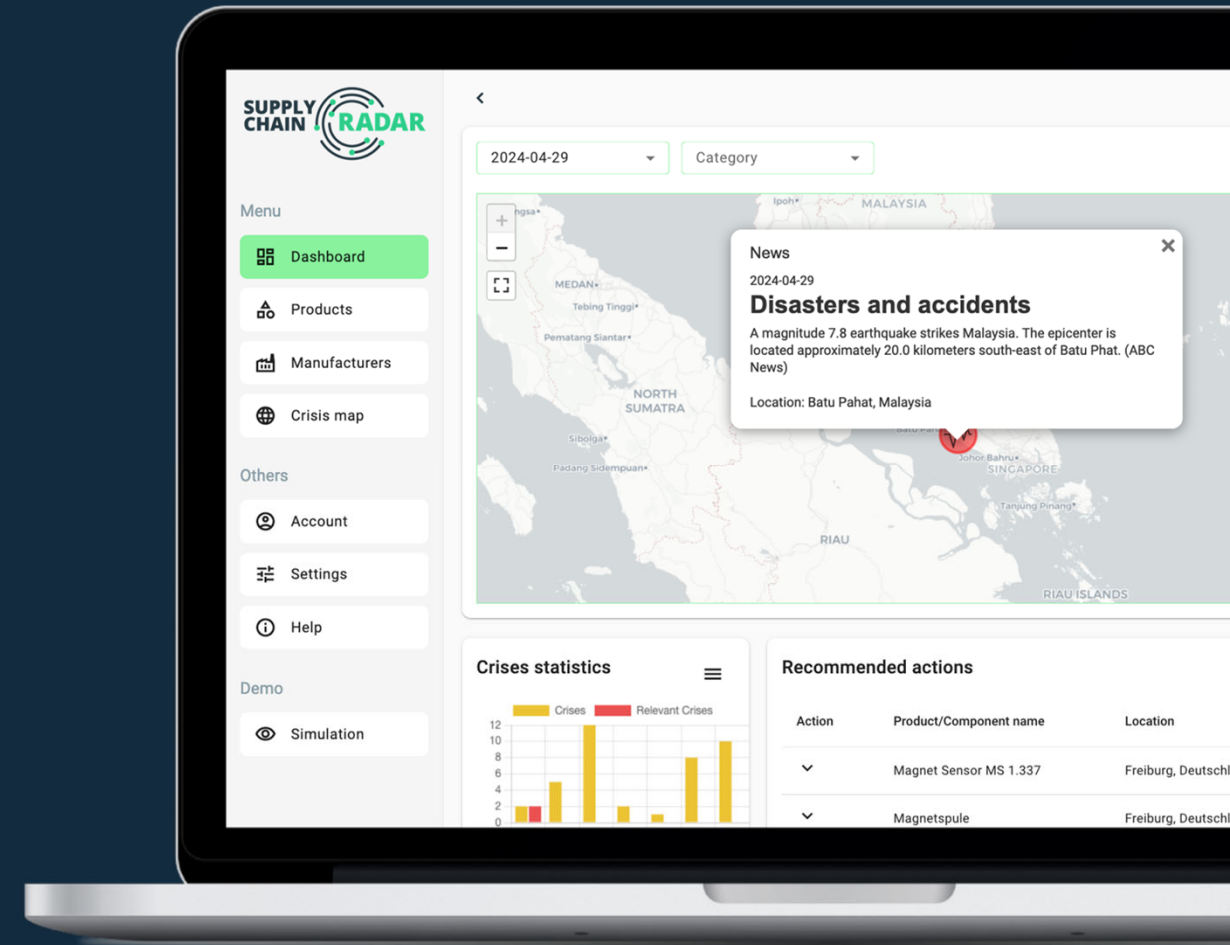
Use of (sensitive) company data significantly increases the value of early risk detection and rapid action



Sensitive data can be used without loss of IP protection and without disclosing business secrets

Use Case Description

- Forward-looking risk and crisis management in supply chains
- First demonstrator available
- Modularly expandable
- Investigation of contingencies and options
- Continuous Development via German and EU funded research projects  
- Online Demo: bretfeld@advaneo.de





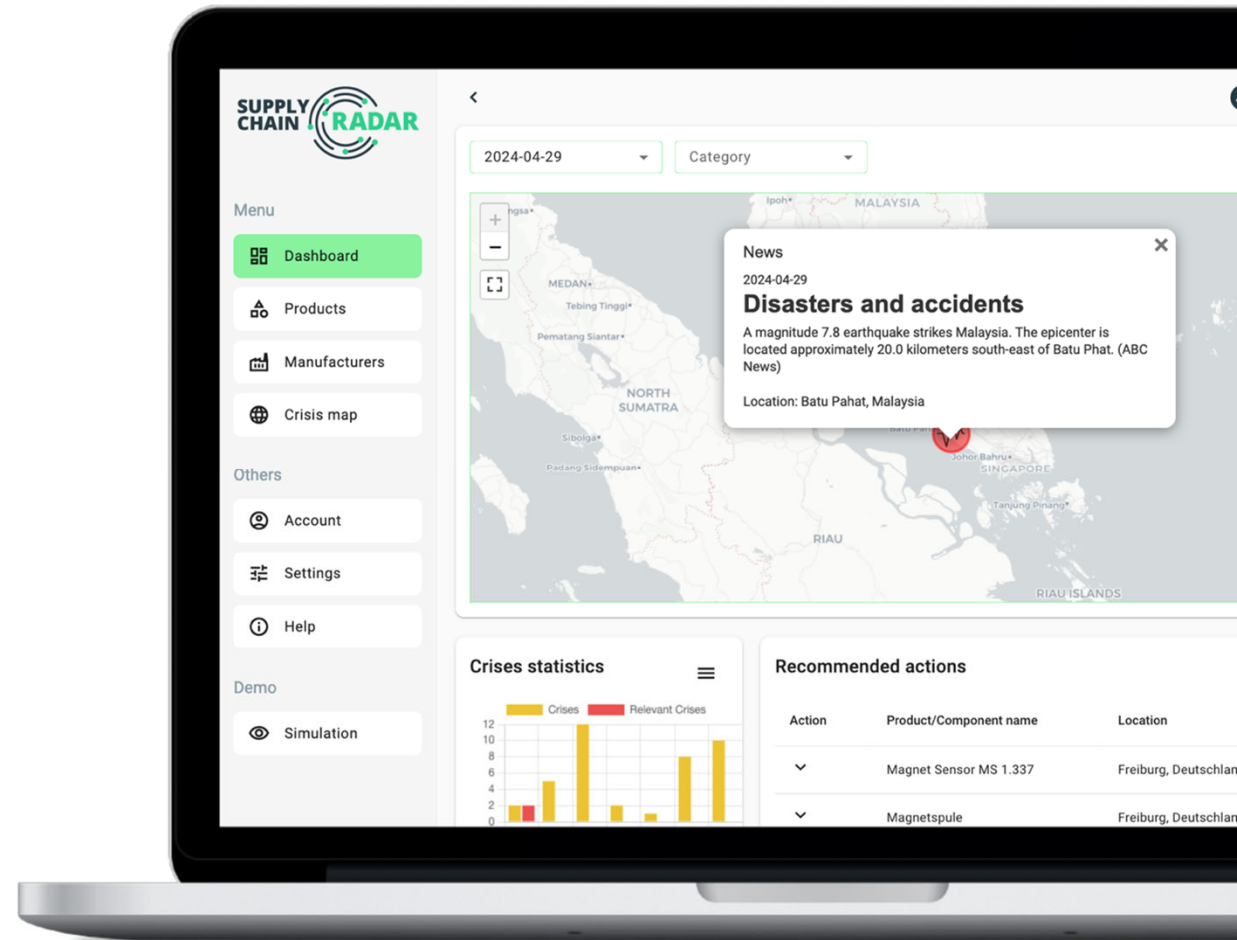
Stay ahead of the wave with the Supply Chain Radar - Key Features

Overcoming crises, securing competitive advantages - how SMEs benefit from the SCR

The particular need for SMEs is primarily due to the fact that they generally do not have their own risk management team. The SCR fills this gap in an uncomplicated way and enables SMEs to set up an early warning system by giving them access to the SCR “as a service”.

Further advantages:

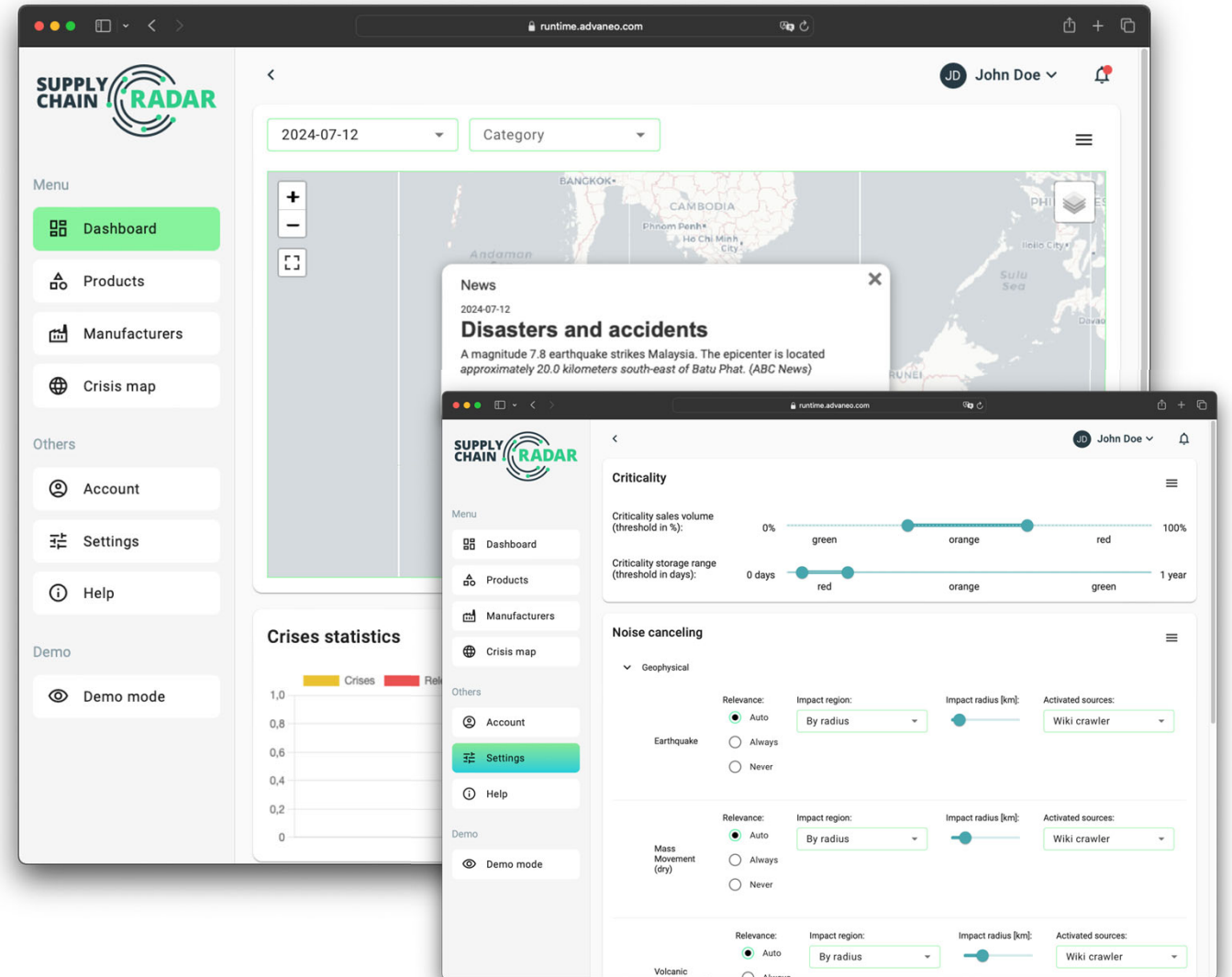
- Creation of transparency for purchasing, controlling and management
- Risks in supply chains can be identified earlier, and alternative courses of action can be initiated more quickly
- Financial or production-related risks and disruptions can be avoided or at least minimized



Modular structure of the individually configurable dashboard

An efficient early warning system for risk assessment and the development of dynamic crisis management

- **Separate systems:** The SCR consists of a general part (crisis monitoring) and a local part that processes sensitive company data.
- **Local data processing:** Sensitive data is processed locally on your systems and not transferred to the cloud.
- **Secure data exchange:** Only necessary geocoordinates are exchanged between the systems.



Feature: Global Crisis Radar

Crisis Radar

- Worldwide recording of crisis-triggering events in 48 categories
- Holistic overall view
- Modular, individually configurable and quickly expandable
 - Criticality of the traffic light function can be set individually
 - Individually configurable data sources at product and component level
 - Impact calibration of events
 - “pay-per-use” - purchase of data and services



The screenshot displays the Supply Chain Radar application interface. On the left is a navigation menu with sections: Menu (Dashboard, Products, Manufacturers, Crisis map), Others (Account, Settings, Help), and Demo (Demo mode). The main area features a date filter (2024-07-12), a category dropdown menu, a world map, a 'Crisis statistics' chart, and a table of crisis events.

Category Dropdown Menu:

- <All categories>
- News
 - Armed conflicts and attacks
 - Business and economy
 - Disasters and accidents
 - Health and environment
 - International relations
 - Law and crime
 - Politics and elections
- Geophysical
 - Earthquake
 - Mass Movement (dry)
 - Volcanic activity/eruption
- Meteorological
 - Storm
 - Extreme temperature

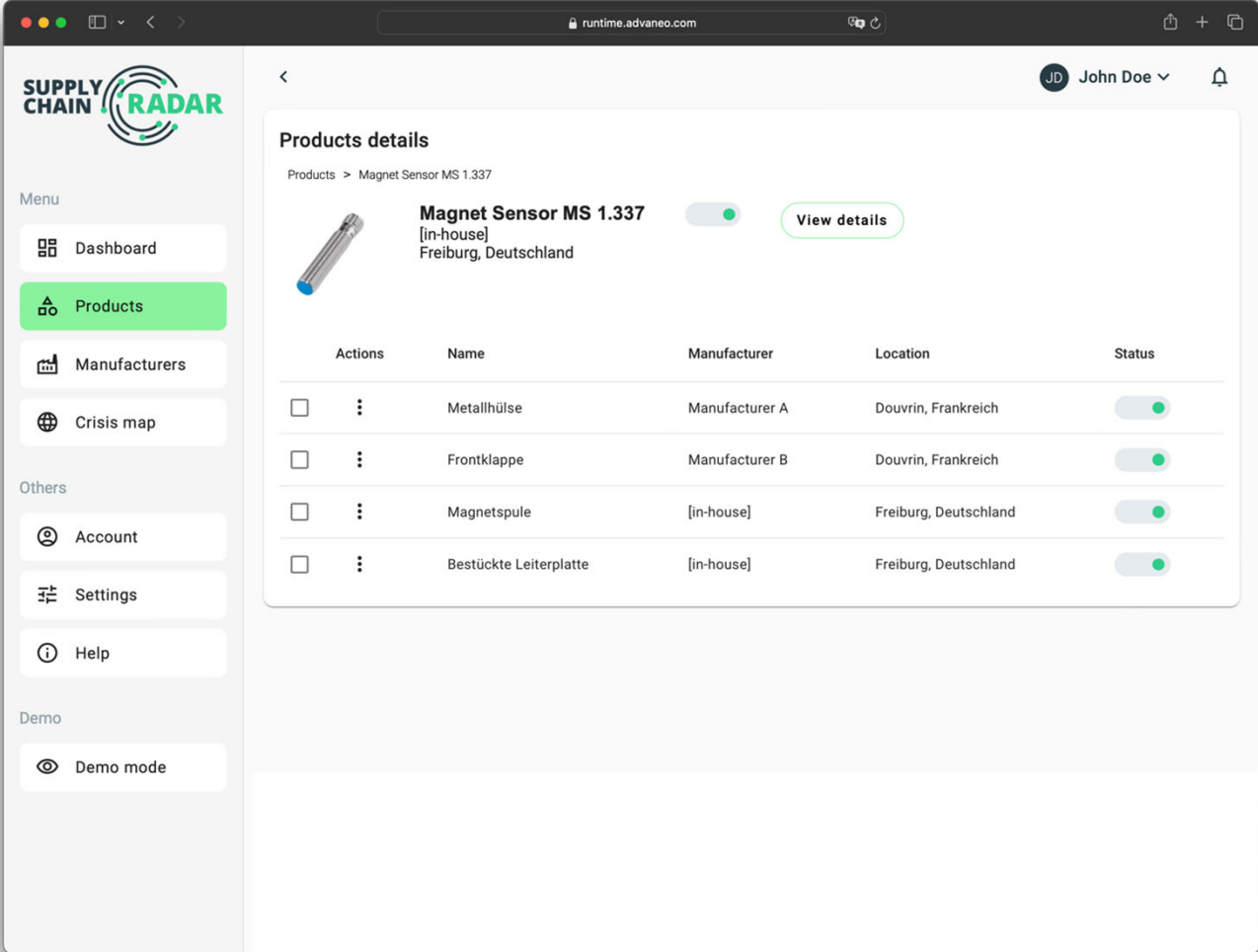
Crisis statistics: A bar chart showing the number of Crises (yellow) and Relevant events (red) over time. The y-axis ranges from 0 to 1.0.

Crisis Events Table:

Location	Status
Freiburg, Deutschland	<input checked="" type="checkbox"/>
Freiburg, Deutschland	<input checked="" type="checkbox"/>
Kuala Lumpur, Malaysia	<input checked="" type="checkbox"/>

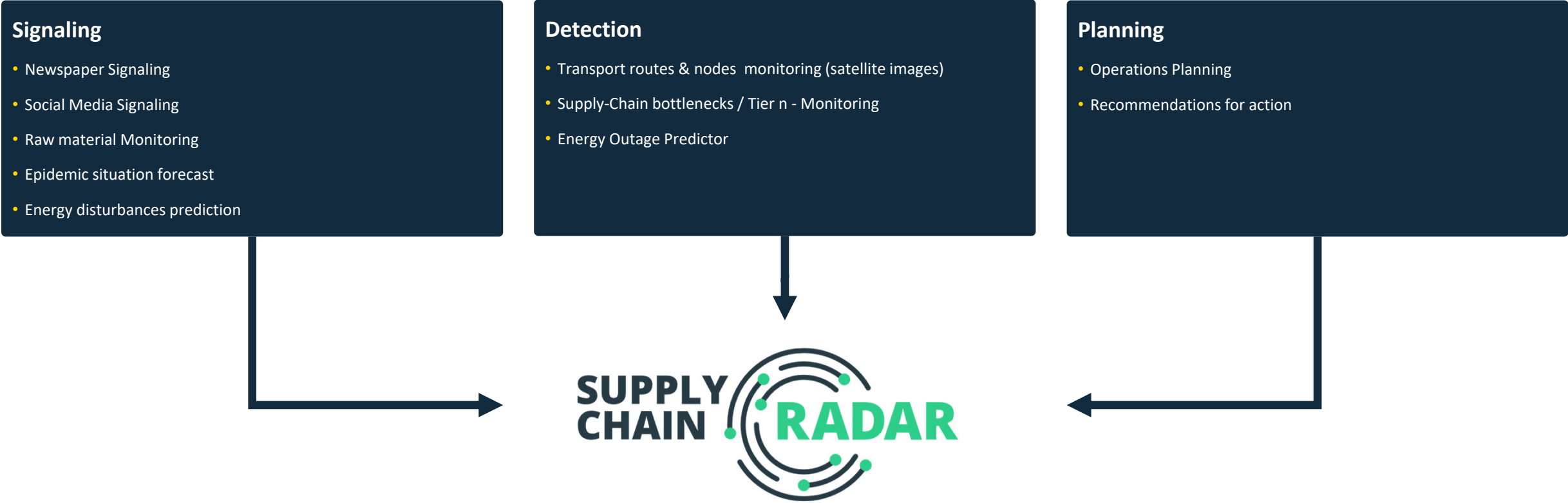
Feature: Product and component description

- Recording of all (important) products and components
- Recursive recording/display of tier-n components
- Clear overview of location information, status and separation of inhouse or external suppliers for specific product entries



Outlook: AI-Modules in the Supply Chain Radar

The AI-based analysis tools are being developed in the PAIRS R&D project and other AI lighthouse projects of the Federal Ministry for Economic Affairs and Climate Protection.



Thank you for your attention!

If there are questions, please do not hesitate to ask...



Julien Adelberger
Business Development Manager

T +49 (0) 211 87 66 91- 0

M +49 (0) 152 513 729 18

adelberger@advaneo.de



Jürgen Bretfeld
CEO

T +49 (0) 211 87 66 91- 0

M +49 (0) 178 8 32 09 65

bretfeld@advaneo.de

ADVANEEO

Access to the world of data

ADVANEEO GmbH

Neuer Zollhof 2

40221 Düsseldorf

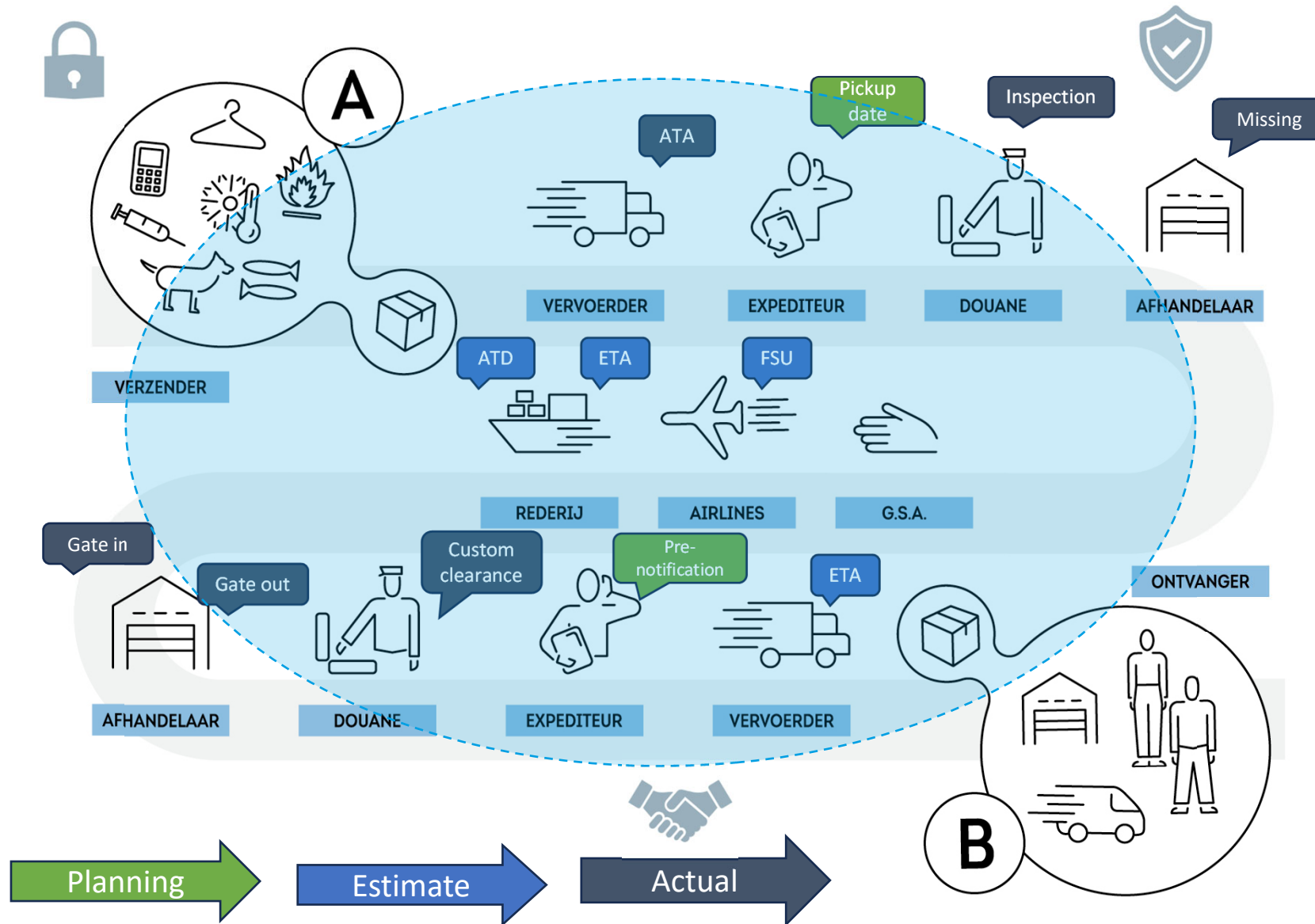
T +49 (0) 211 876691-0

Data Spaces Symposium

BDI & Digital Freight Documents:
Why and how to get involved

Steven Schouten

Controlled Data sharing with the BDI



Parties in the chain are informed at the same time about relevant events

You will receive the data for which you are authorized

A virtual data network with ad-hoc links



Join these and many others

Koplopers



Technologie & eCMR providers



Nieuwe deelnemers



What do we offer



BASIC DATA INFRASTRUCTURE



(Technical)
support



Stakeholder
engagement



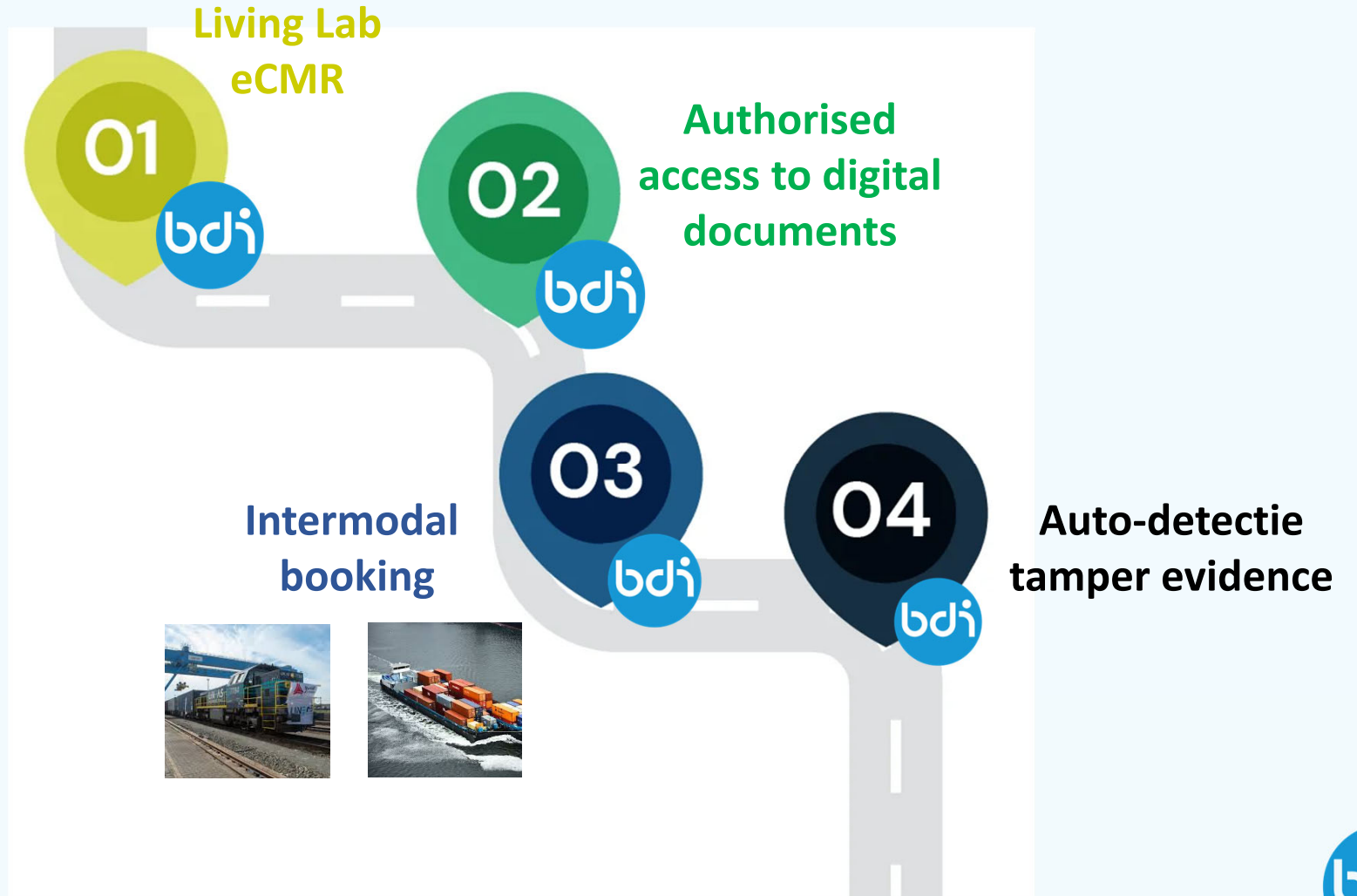
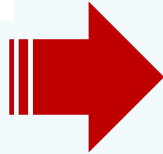
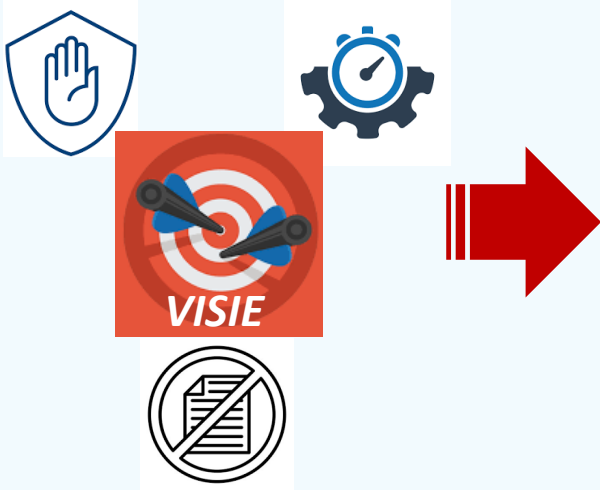
Governance
set-up

Living Lab Digital Freight Documents

- **Digitise documents.** Drivers now often write a paper CMR themselves or receive one at the counter (regional terminals).
- **Saving time** in the handling of the container, for both shippers (terminal, producer) and transporters.
- **Provide more information,** For example OCR / camera images.
- **Standardised processes** for data sharing and signing of documents across terminals. Container transfer is based on gate in/out at the participating terminals.
- **Combating criminal activities.** With e-CMR we increase the security in the operational processes. For example, in the chartering. From an insurance perspective this can lead to a lower deductible or the elimination thereof for carriers.



Roadmap



Success

01

Living Lab
eCMR

bdi



Succesfactoren voor adoptie

- Level playing field
- No vendor lock-in
- Broad participation of chain partners
- Operationalise in practice

Collect + Go



TransFollow®

CARGOLEDGER



How to join



bdinetwork.org



The screenshot shows the BDI website homepage. At the top right, there are navigation links: "Basic Data Infrastructure", "For whom?", "Living labs", and "Use cases". The main content area features a "BDI framework" tag, the title "The Basic Data Infrastructure", and a descriptive paragraph: "The Basic Data Infrastructure (BDI) is a framework enabling fully digital and automated logistics operations. This is done in an efficient, safe and reliable manner to ensure optimum goods transport, both in the Netherlands and abroad." Below this is a "Sign up!" button. To the right is a video thumbnail showing a person's hands using a laptop and a smartphone with binary code overlaid. At the bottom, a section titled "These organisations have already signed up:" lists logos for "ie", "evofenedex", "Ministerie van Infrastructuur en Waterstaat", and "Por". The footer contains the heading "Optimum collaboration" and two columns of text: "If you want to optimise goods transport and compete with logistical service providers worldwide in the near future, you need to be able to exchange" and "Imagine logging in just once and having 24/7 access to the digital information of your business partners? The BDI makes this possible! This is known as a".





basic data
infrastructure

Contact

Connekt
Ezelsveldlaan
2611 RV Delft

Postbus 48
2600 AA Delft

+31 15 251 65 65
<https://bdinetwork.org/>

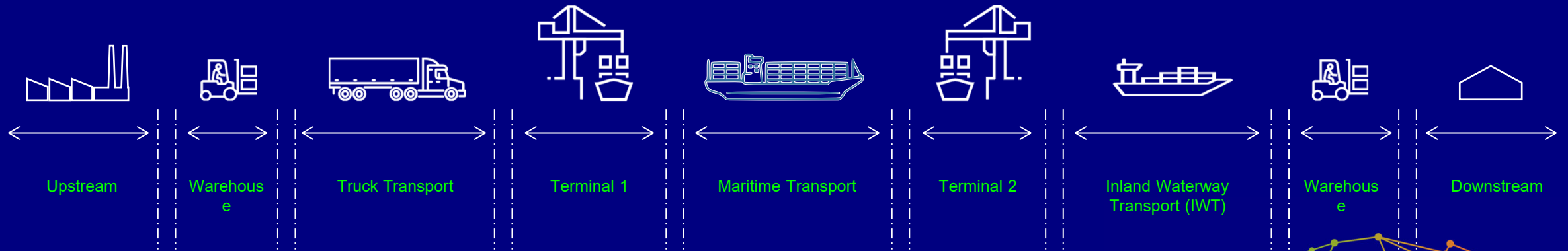


Data Spaces Symposium

From outbound steel delivery to inbound sportswear shipment
- fully digitized and made secure through data spaces

Birger Schrevens

The Fragmented Supply Chain



Uncertainty

Interconnected supply chains cause cascading effects when disruptions occur



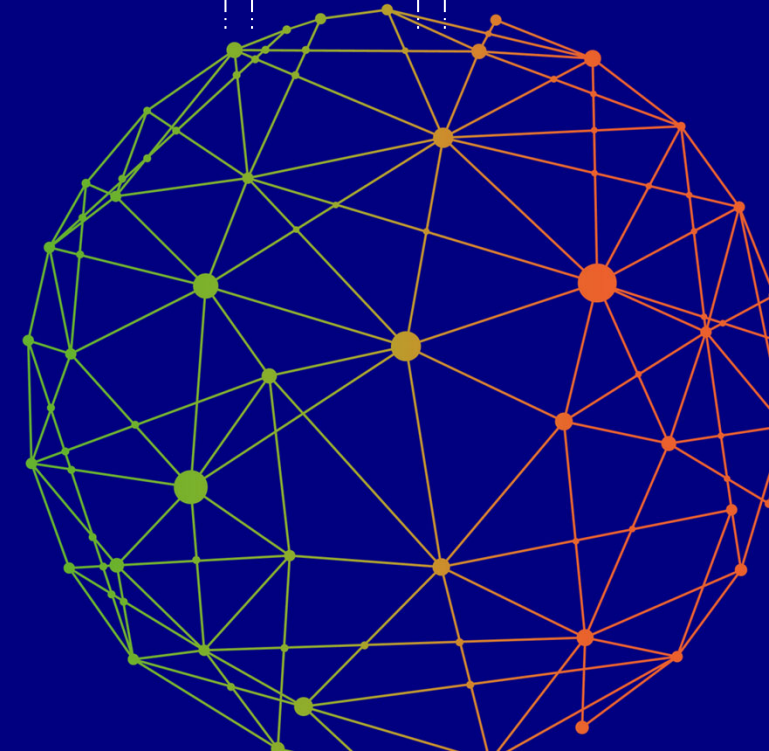
Limited visibility

Lack of an E2E view of the supply chain affect planning optimization or response to disruptions



Inability (or unwillingness) to collaborate

Technical or competitive restrictions limit otherwise beneficial collaborations



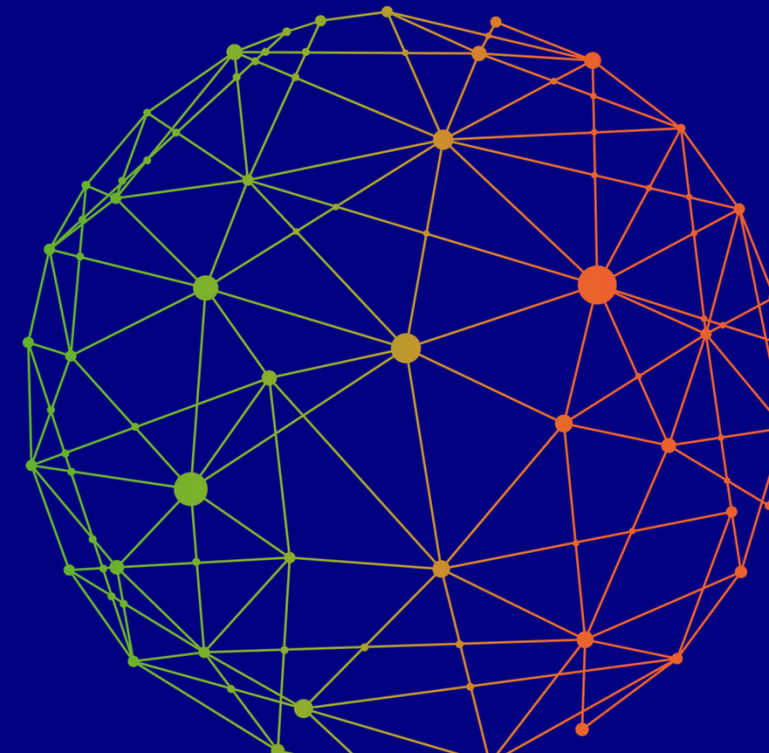
SYTADEL project

What?

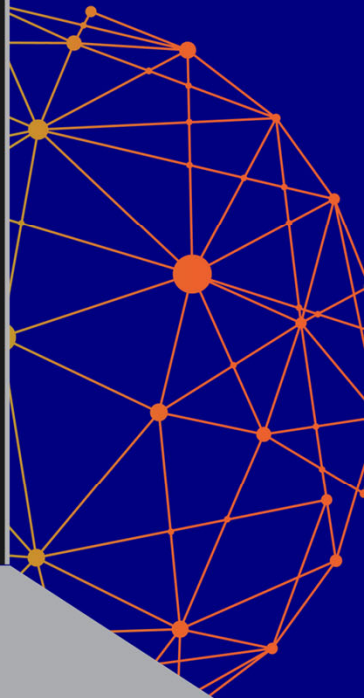
Apply Data Space technology in multimodal supply chains to create end-to-end visibility

How?

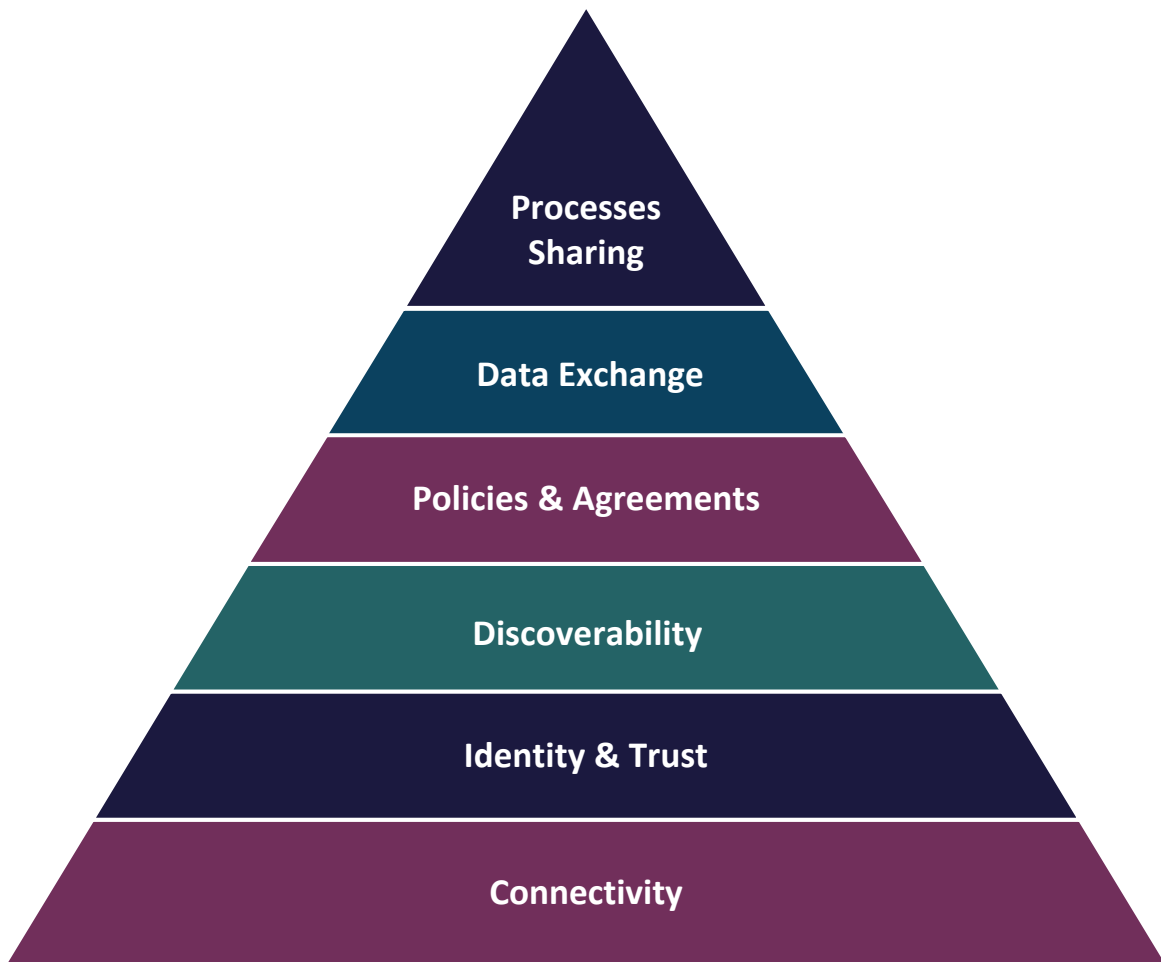
1. EDC Connector to automate real-time data exchange according to role-based policies
2. ETA predictions to synchronize logistics processes
3. Anticipate delays by comparing Estimated to Required Time of Arrival



Nike-BCTN inbound sportswear shipment



Data Sharing = By-Product of Process Sharing



Collaborate efficiently in an automated way

Exchange information about your services

Determine your collaboration rules

Access all other players & services

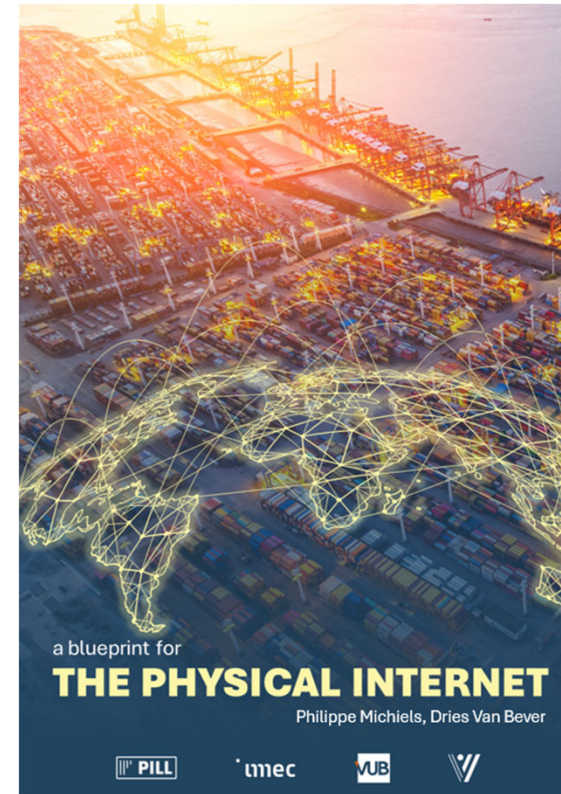
Identify yourself

Connect to the network



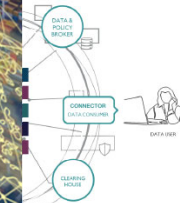
The Physical Internet Blueprint

A comprehensive vision implementing the Physical Internet



**PHYSICAL INTERNET LIVING LAB
A BLUEPRINT FOR THE PHYSICAL INTERNET**

...ed approach towards establishing full...
...s (as depicted in **Figure 4**):
...ace connectors ensure uniform...
...ization's digital services and data...
...ontrol, and data usage monitoring...
...identities and Verifiable Credentials...
...Generic Identity Management and...
...d catalog services, governed by the...
...ata Space Parties and their services...
...ual agreements provide a legal and...
...adapters in the data plane of the



...owners and publishers connect to the data space via...
...s. The different concerns are depicted centrally as...
...st such as (SHARE Foundation, 2024),...
...space), proving the relevance for data...
...ysical Internet fully aligns with data...
...ation.

- PHYSICAL INTERNET LIVING LAB
A BLUEPRINT FOR THE PHYSICAL INTERNET**
- Choice of what community you want to join, whom you want to collaborate with

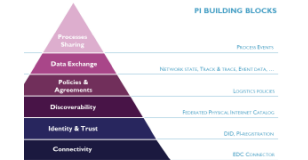
Foundation for PI

...es a robust, scalable, and secure foundation to enable...
...diverse logistics stakeholders. Data spaces provide an...
...ese needs.

...ortimize data **sovereignty**, allowing stakeholders to retain...
...r data while participating in a collaborative network. The...
...spaces mirrors the decentralized nature of the PI, ...
...reliance on a single controlling entity. Data spaces...
...nsparency while enabling accountability through event-...
...visibility into network activities. Data spaces are built...
...lar components, enabling seamless integration and...
...processes.

A Layered Architecture

...l & Lycklama, 2021b) addresses different concerns at...
...ed as a layered architecture depicted in the below figure...
...id explain how and why this layered architecture can be...
...Physical Internet.



...f data space and physical internet concerns onto architectural layers.



Get it here: Birger.Schrevens@imec.be



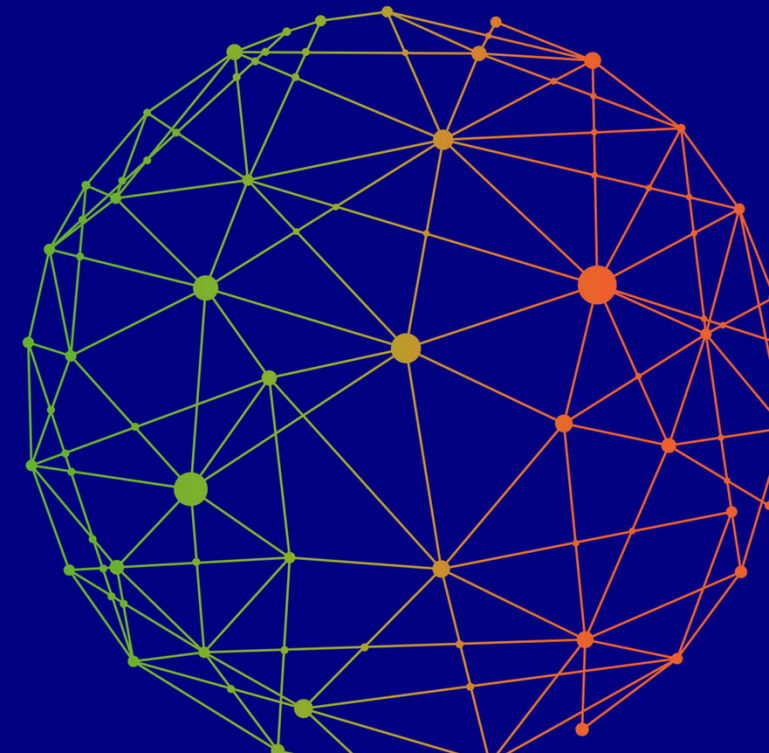
Contact

Birger Schrevens

Senior Innovation Advisor
+32 486 69 00 22



birger.schrevens@imec.be



Data Spaces Symposium

Expert talk |

A data space from three key perspectives

Ute Burkhardt, Riccardo Giovannotti, Pierre Guinault
& Ramy H'cini

Data Spaces Symposium

GDSO growth, new use cases,
tyre industry journey

Riccardo Giovannotti



Global Data Service Organisation for Tyres and Automotive Components (GDSO)

International Non-Profit Association
Established in Belgium in January 2022



Brussels - Belgium

2022 MEMBERSHIPS

5 MEMBERS:





Global Data Service Organisation for Tyres and Automotive Components (GDSO)

International Non-Profit Association
Established in Belgium in January 2022



Brussels - Belgium

2025 MEMBERSHIPS

12 MEMBERS



7 ASSOCIATES:





GLOBAL
NETWORK

Building the worldwide language that unlocks tyres' potential



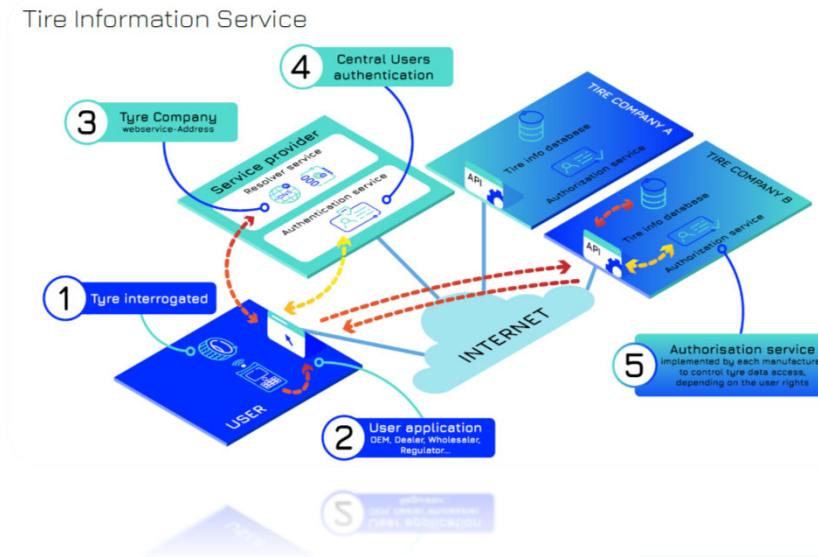
CLOUD



DATA
ANALYSIS

DATA SPACE & CONNECTOR

- Tyre Information Service (TIS)



UII : 301854AAC1493D023116405C



UPDATES

- SEMANTIC: new parameters for OEMs
- SERVICE: query by batch (up to 100 ids)



ENABLED USE CASES

- **THREE MOMENTS OF TRUTH**





VEHICLE MANUFACTURERS



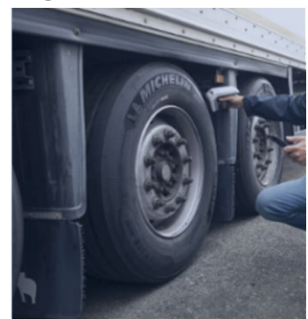
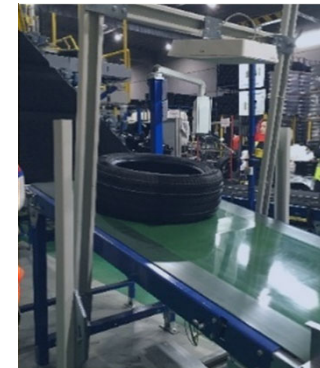
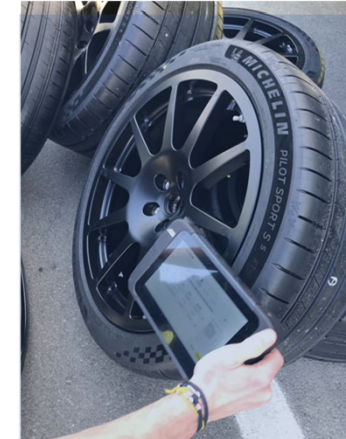
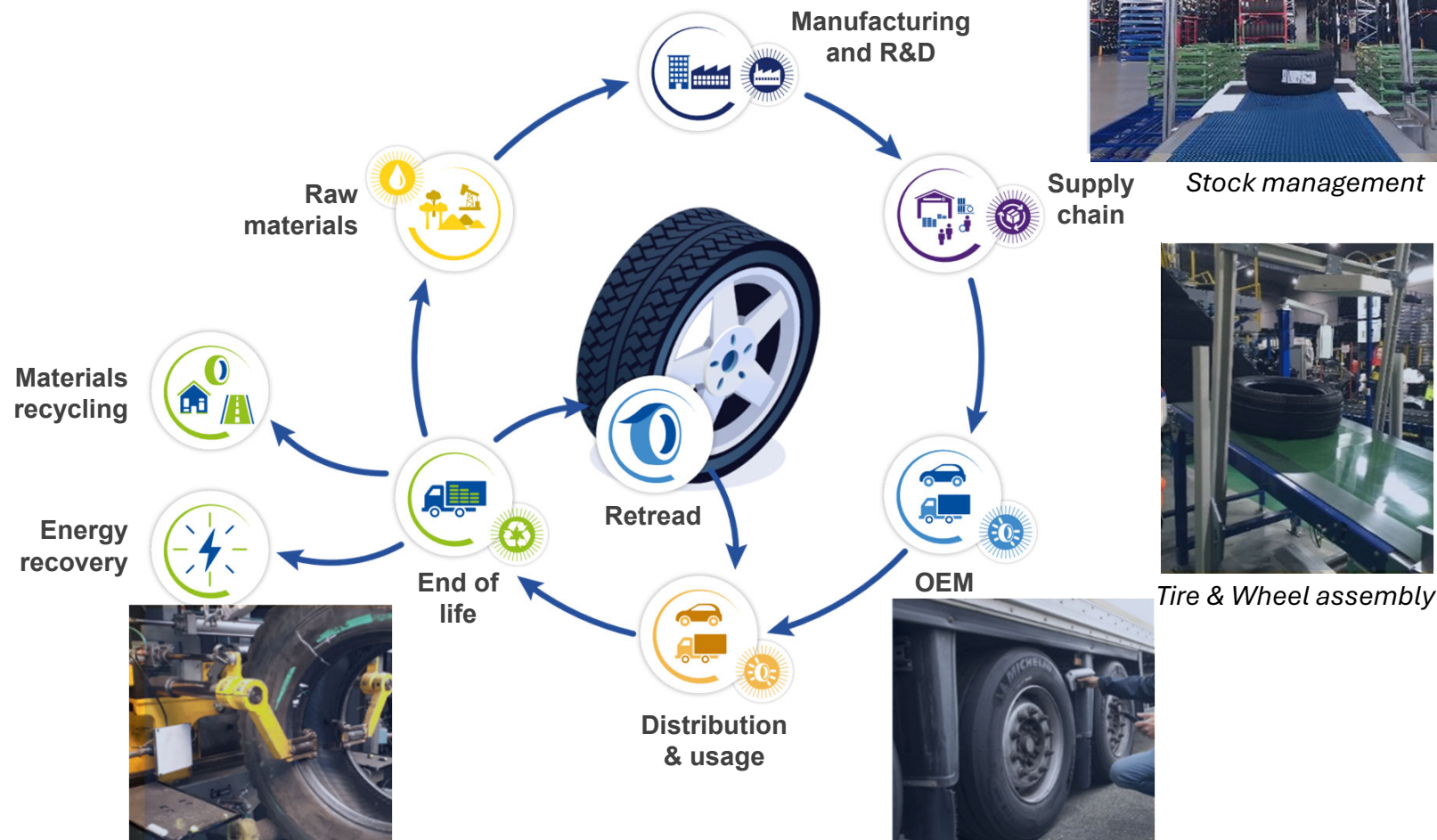
FLEET OPERATIONS

THROUGH ELECTRONIC IDENTIFICATION AND DATA SHARING:

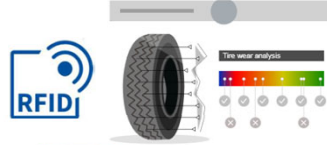
- **TRANSPARENCY OF LOGISTICS WORKFLOW INCLUDING CONFIRMATION OF FULFILLMENT (e.g. DELIVERY & INVENTORY) MANAGEMENT**
- **COMPLIANCE FOR OEMs (THE RIGHT TYRE ON THE RIGHT VEHICLE)**
- **FOR FLEETS SIMPLIFICATIONS AND COST SAVING**

RFID and Tire Data enables efficiency and traceability

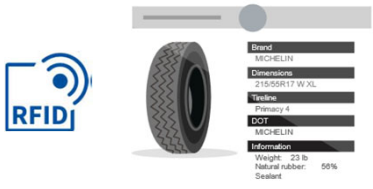
From cradle to grave also contributes to improve customer experience and sustainability



RFID with enriched data till end of life ensure high value through high traceability & sustainable proof

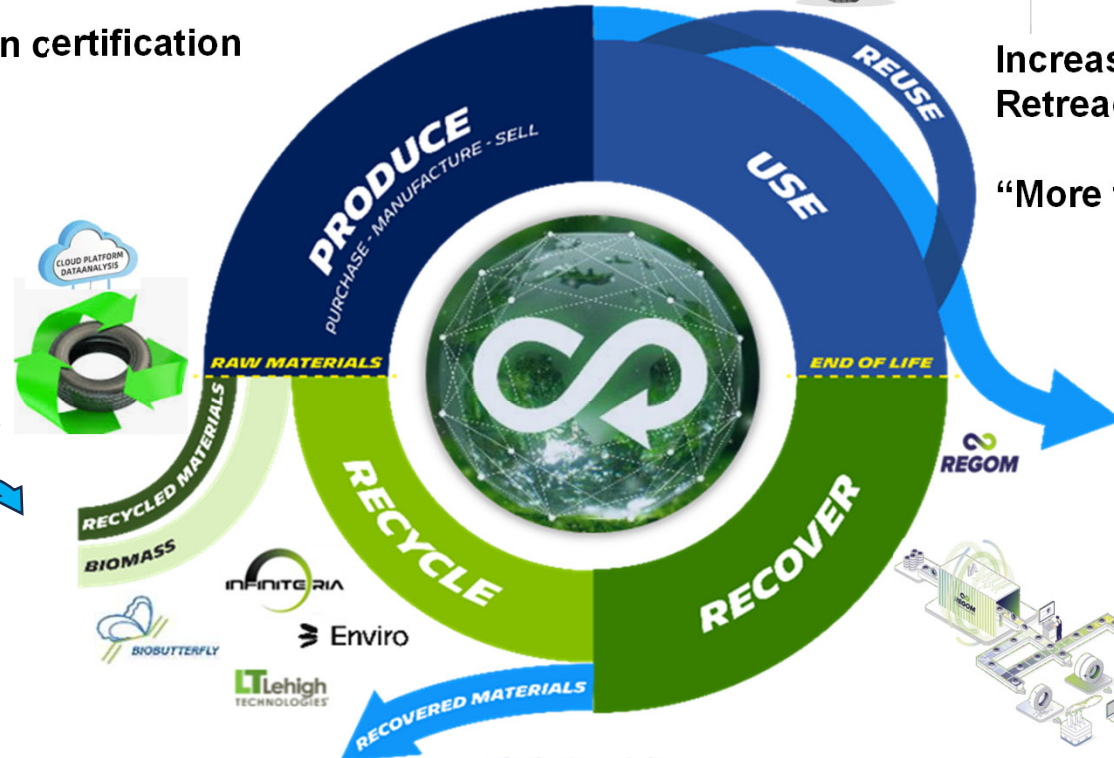
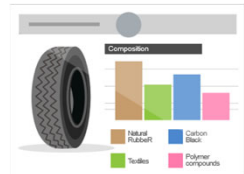


Tire components origin certification

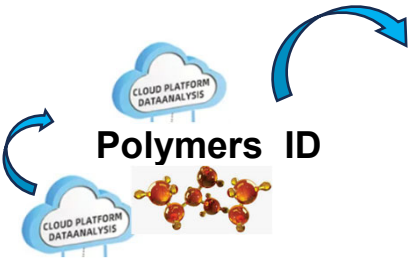


Increase reuse rate by pairing "same" tread depth
Retread : more efficient casing collection & diagnostic

"More transparency in REP funding"



RRM proof
DPP Compliant



Bio tech material Data ID



Pyrolysis material ID



After shredding material identification → ID

Better sorting quality :
- more material recovery
- avoid material incineration



Automated ELT sorting **REGOM**



NEW CONNECTOR DATA CRADLE TO GRAVE

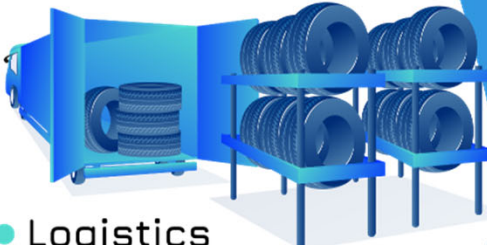
- TYRE LIFECYCLE DATA SERVICE
EVENTS ALONG TYRES' LIFE

HOW TO COLLECT KEY EVENTS' DATA ALONG TYRES' VALUE CHAIN?



● Tire manufacturers

Good receipt, manage stock, communicate tire details to any 3rd party contractor (tire supplier, lease company etc.) tire hotel & repairing



● Logistics

Warehouse entry and exit versus order, systems stock



● OEMs

Warehouse, logistics, tire/rim fitment, wheel/vehicle fitment, sensors feed (speed, kms, advanced features like grip levels)



● Distributors / Wholesalers



● Fleet management

Asset track, tire position on vehicle, vehicle load/tire i.p., tires in stock, tire movements tracked



● Quality insurance

Tire identity in case of claim, tracking back to production data



● Retreading

Casing identification, traceability, updated identity



● End of life

Ensure tires are removed from the market and scrapped, allow recyclers to segregate tires

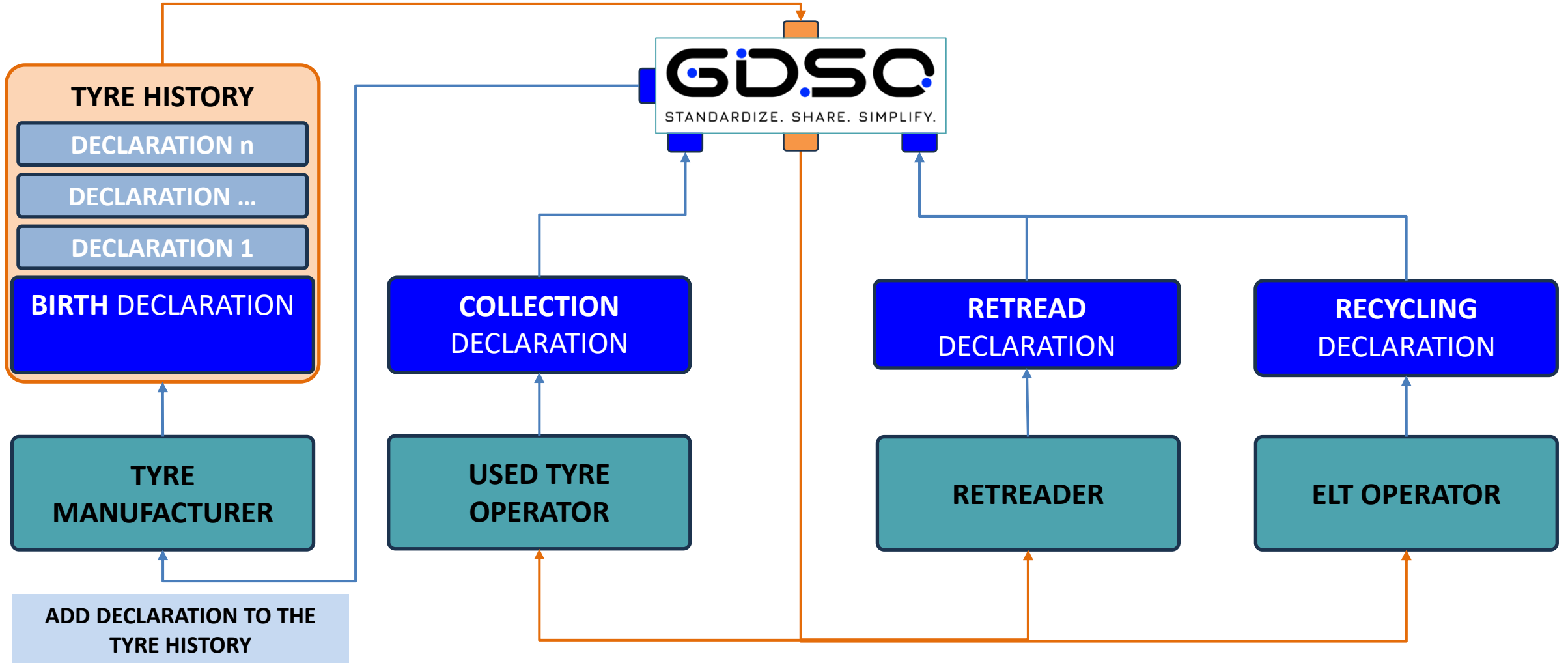


STAKEHOLDER

DECLARATION

TYRE HISTORY

RETRIEVE THE TYRE HISTORY





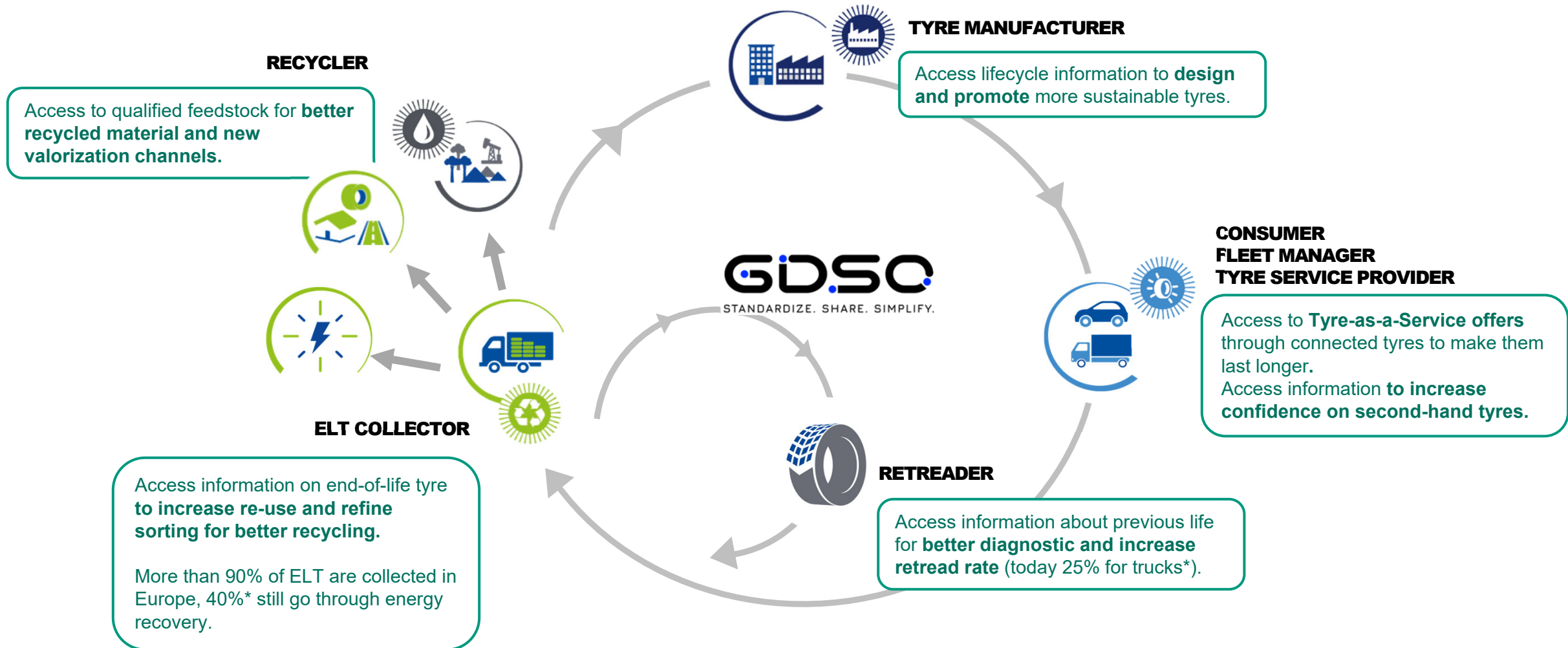
Beyond tyre's identification

www.gdso.org

info@gdso.org

AVENUE D'AUDERGHEM 22-28 BTE 9 • 1040 ETTERBEEK (BRUSSELS - BELGIUM)

Thanks to DPP, tyre circular economy digitization will benefit to every stakeholder



Driving real impact with Data Spaces

Data Spaces Symposium 2025

Ramy H'cini
CTO  Think-it

DSBA

 BDV
BIG DATA VALUE
ASSOCIATION

 FIWARE
FOUNDATION

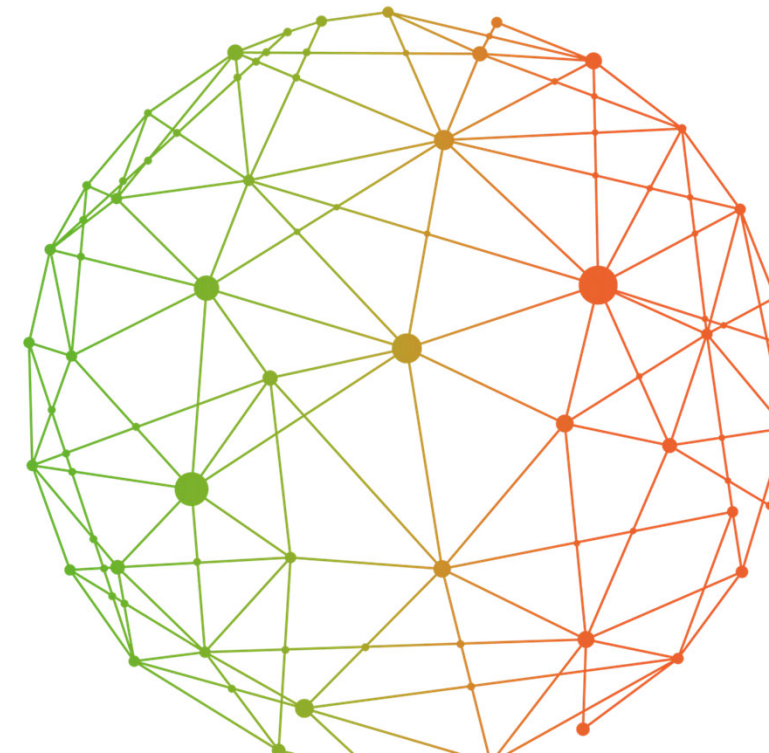
 gaia-x

 INTERNATIONAL DATA
SPACES ASSOCIATION

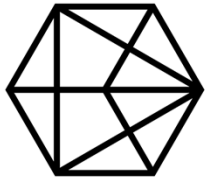

DATA SPACES
SUPPORT CENTRE

 Funded by
the European Union

The Data Spaces Support Centre receives funding from the European Union Digital Europe
Programme under grant agreement n° 101083412



A bit of our background



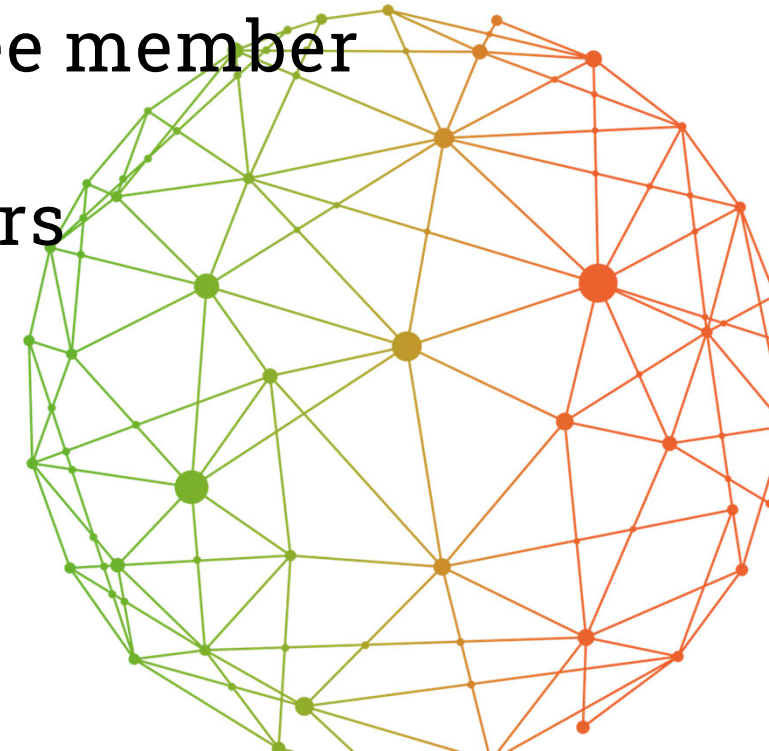
Mobility
Data Space
Data Sharing Community



Catena-X
Automotive Network



- Official Connector Maintainer
- Official Connector as a Service provider
- Architecture committee member
- Top core EDC committers
- DCP co-authors
- Data Spaces Partner
- MVDS guide authors



Solving for scope 3 emissions



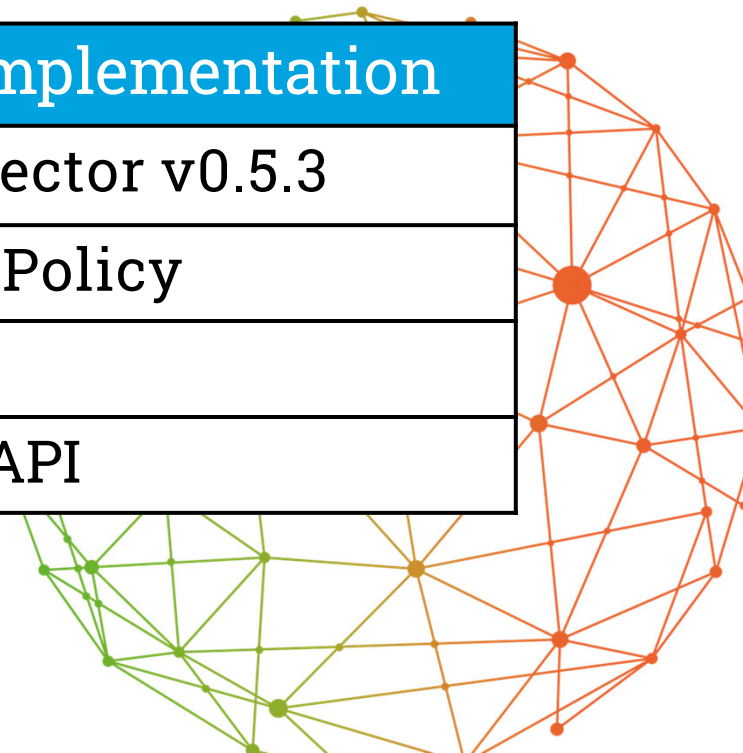
Time to exchange
emissions
between
participants

30 hours

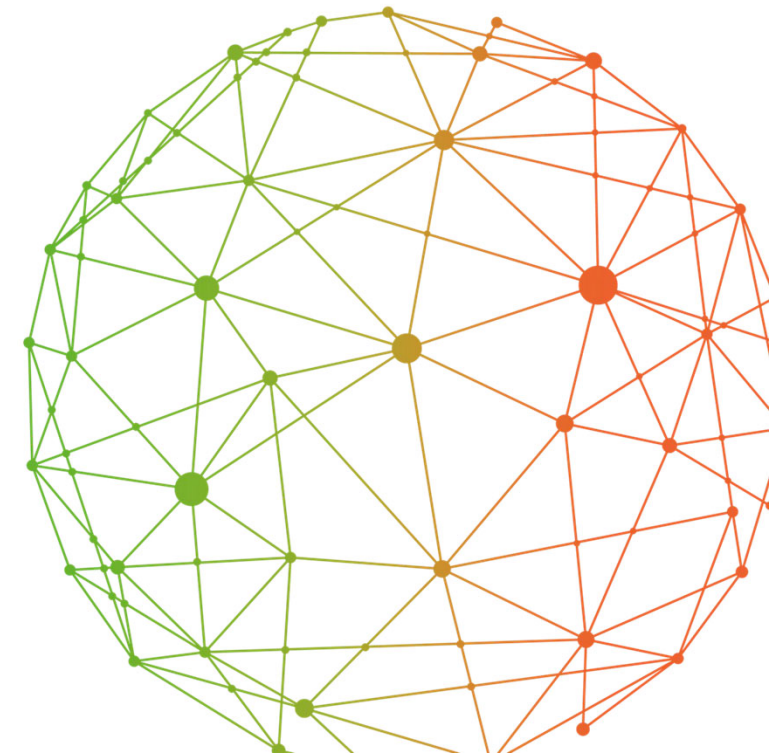
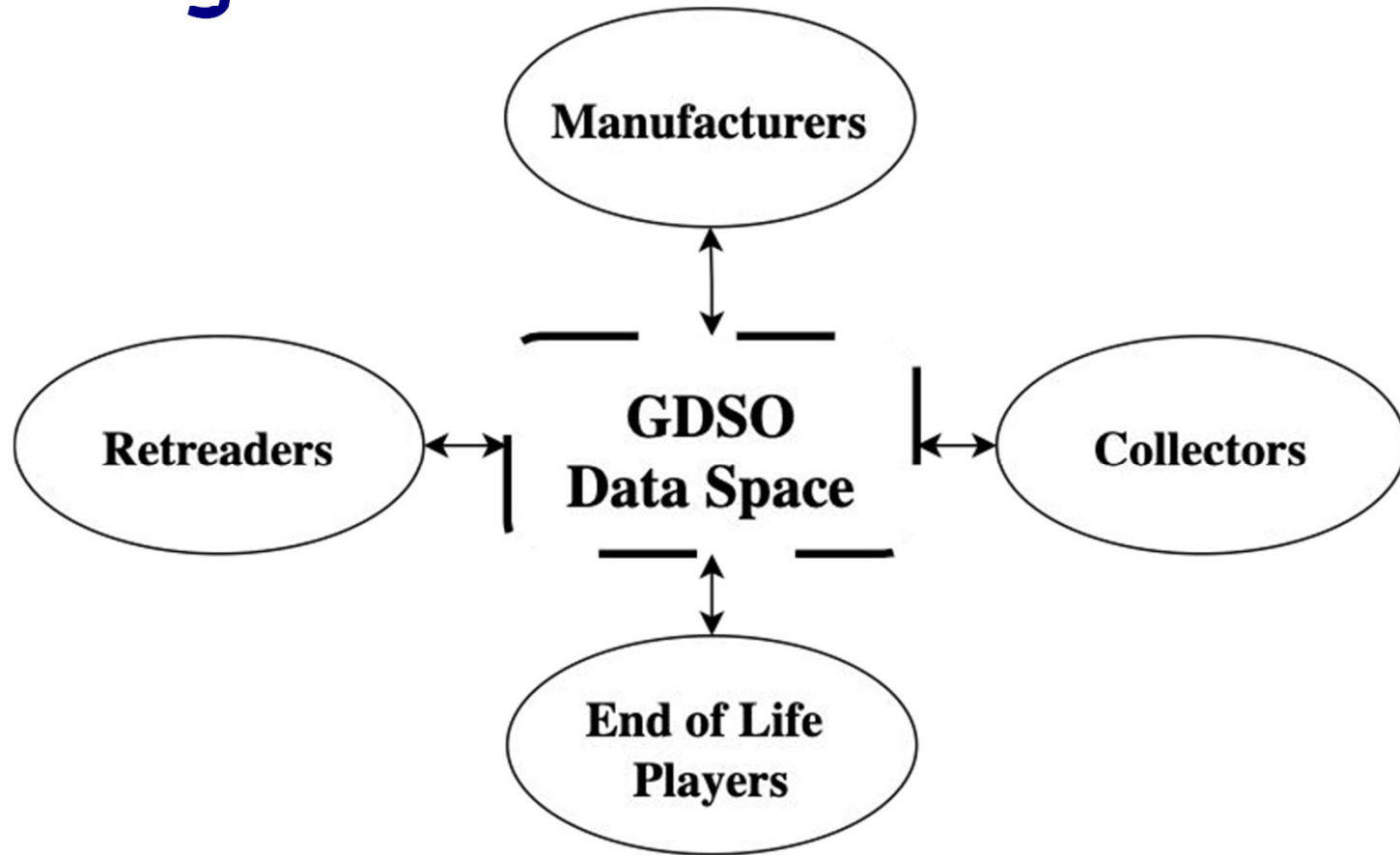


2 hours

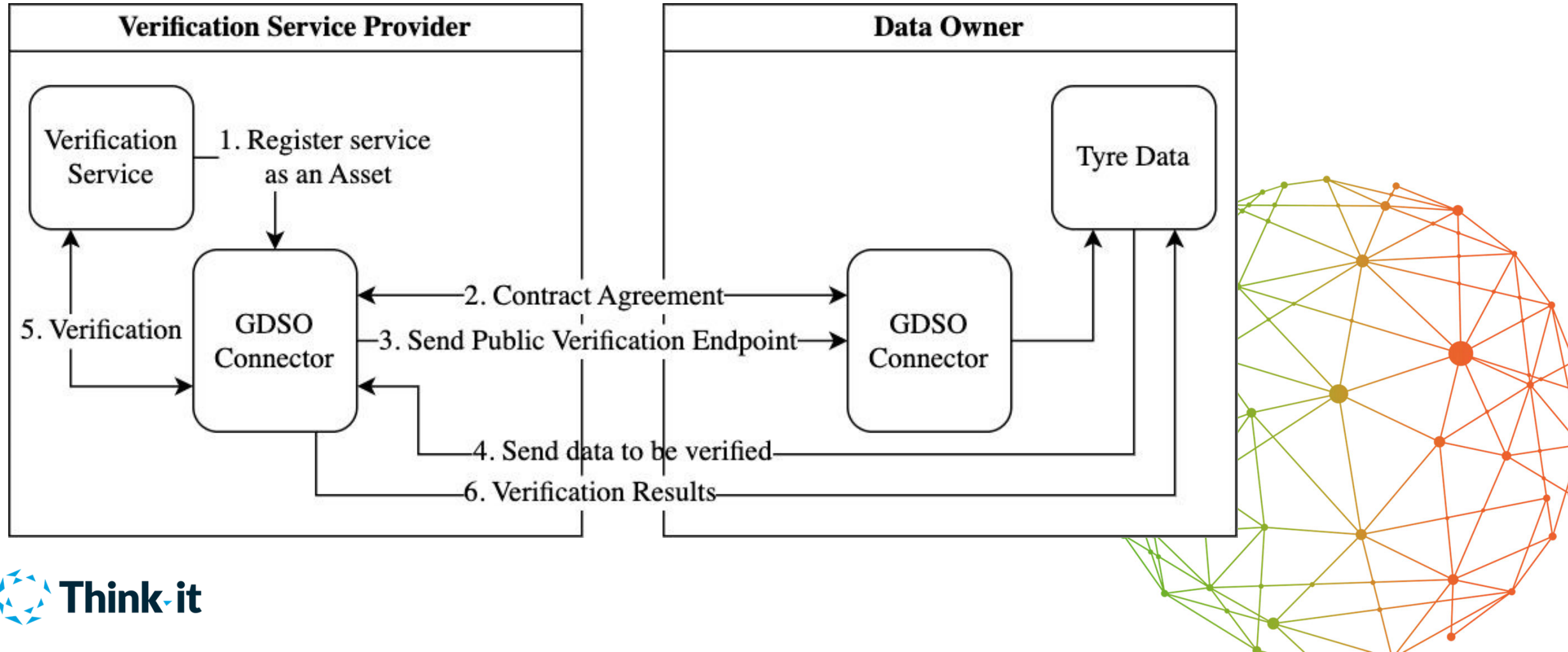
Data Space Building Blocks	Technical	Implementation
Connector	Tractus-X EDC Connector v0.5.3	
Exchange policies	Business Partner ID Policy	
Identity Service	MIW (SSI)	
Use Case Application	SFC Data Exchange API	



Enabling the Tyre Industry with Sovereign Data Exchange



Enabling the Tyre Industry with Sovereign Data Exchange



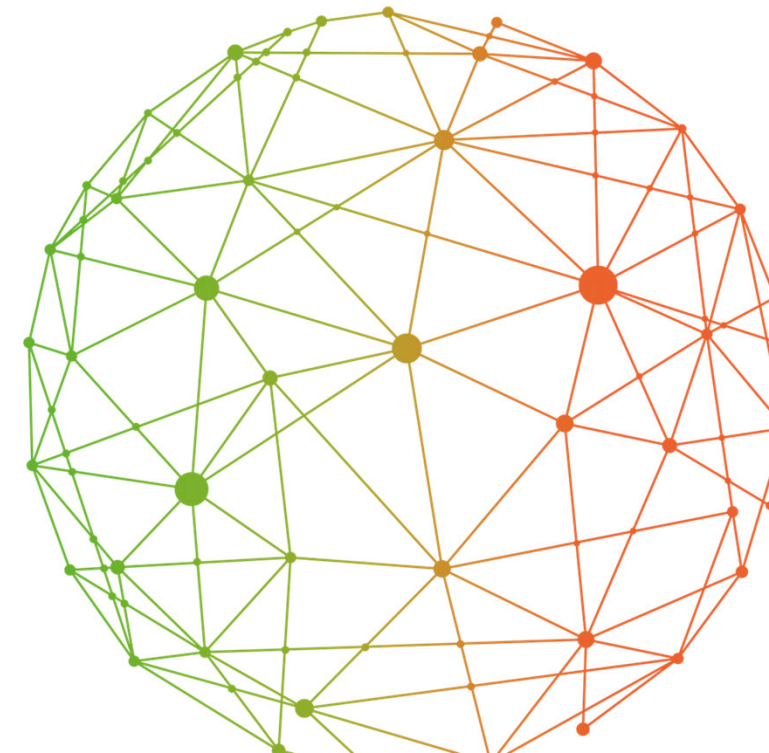
How we're enabling impact with Data Spaces

Interoperability, Identity and Trust

- Eclipse Dataspace Components (EDC)
- GAIA-X and iSHARE Trust Frameworks
- SSI/DID and Decentralized Claims Protocol

Make Data Space Technology Easy

- Data Spaces as a Service (DaaS)
- Connector as a Service (CaaS)
- Suite of OSS SDKs
- Onboarding Partner



Data Spaces Symposium

Discussion |
Q&A with data spaces users

Ute Burkhardt, Arunav Mishra & Jürgen Sturm